

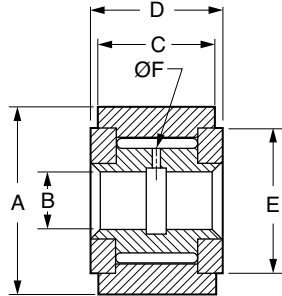


# NEW

## Needle Bearing

### CAM YOKE ROLLERS-SEALED

- High-Carbon Steel Through-Hardened and Ground Outer Race
- Low-Carbon Alloy Steel Induction Hardened Inner Races
- Shafts should be hardened to Rc 58 min.



Catalog Number	Nom. I.D.	A O.D +.000 -.001	B Bore +.0002 -.0004	C Width +.000 -.005	D Overall Width +.005 -.010	E Flange O.D. Ref.	F Oil Hole	Recom. Shaft Dia. ±.0002	Max. Static Load Rating lbs.	Basic Dyn. Load Rating lbs.
BBXCAM-YN24	3/4	.750	.250	.500	.5625	5/8	3/32	.2497	4130	1660
BBXCAM-YN28	7/8	.875	.250	.500	.5625	5/8	3/32	.2497	4130	1660
BBXCAM-YN32	1	1.000	.3125	.625	.6875	23/32	3/32	.3122	6120	2225
BBXCAM-YN36	1-1/8	1.125	.3125	.625	.6875	23/32	3/32	.3122	6120	2225
BBXCAM-YN40	1-1/4	1.250	.375	.750	.8125	1	3/32	.3747	8500	3930
BBXCAM-YN44	1-3/8	1.375	.375	.750	.8125	1	3/32	.3747	8500	3930
BBXCAM-YN48	1-1/2	1.500	.4375	.875	.9375	1-1/8	3/32	.4372	11280	4840
BBXCAM-YN52	1-5/8	1.625	.4375	.875	.9375	1-1/8	3/32	.4372	11280	4840
BBXCAM-YN56	1-3/4	1.750	.500	1.000	1.0625	1-1/4	3/32	.4997	15840	6385
BBXCAM-YN60	1-7/8	1.875	.500	1.000	1.0625	1-1/4	3/32	.4997	15840	6385
BBXCAM-YN64	2	2.000	.625	1.250	1.3125	1-1/2	3/32	.6247	21140	8090
BBXCAM-YN72	2-1/4	2.250	.625	1.250	1.3125	1-1/2	3/32	.6247	21140	8090
BBXCAM-YN80	2-1/2	2.500	.750	1.500	1.5625	1-3/4	1/8	.7497	32900	11720
BBXCAM-YN88	2-3/4	2.750	.750	1.500	1.5625	1-3/4	1/8	.7497	32900	11720
BBXCAM-YN96	3	3.000	1.000	1.750	1.8125	2-1/4	1/8	.9996	49820	15720
BBXCAM-YN104	3-1/4	3.250	1.000	1.750	1.8125	2-1/4	1/8	.9996	49820	15720
BBXCAM-YN112	3-1/2	3.500	1.125	2.000	2.0625	2-7/16	1/8	1.1246	63250	22800