

NEEDLE BEARINGS
CAGE-GUIDED
FULL-COMPLEMENT
STANDARD TYPE CAM FOLLOWERS

PHONE: 516.328.3300 • FAX: 516.326.8827 • WWW.SDP-SI.COM

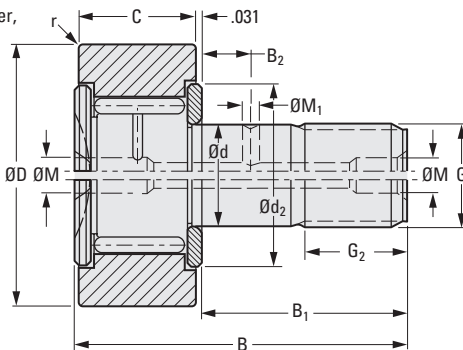
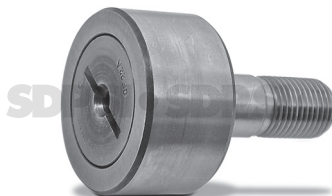


> MATERIAL:

Roller & Needles - 52100 Steel
Stud - 1055 Steel

Catalog Number	Load Ratings * lbf			
	Dyn. C	Stat. C _o	Dyn. C _w	Stat. C _{ow}
S9930A-CFS0750	1830	2900	1140	1650
S9930A-CFS0875			1120	2220
S9930A-CFS1125	2700	4300	2190	3550
S9930A-CFS1250			3300	4800
S9930A-CFS1375	4300	6300	3600	5400
S9930A-CFS1500			4200	6900

* The basic load ratings C and C_o apply if the bearing outer ring (with cylindrical outside surface) is mounted into a housing with standard bearing fit; when used as track roller, the load rating C_w and C_{ow} apply.



INCH COMPONENT

Catalog Number	B ₁ Stud Length	D Roller Dia. +.000 -0.001	d Stud Dia. +.0010 -0.0000	C Roller Width +.000 -0.005	B Length	G Thread UNF	G ₁ Thread Length	Lubrication Holes Dia.	
								M	M ₁
S9930A-CFS0750	.875	.750	.3750	.500	1.406	3/8-24	.375	.188	.125
S9930A-CFS0875		.875							
S9930A-CFS1125	1.000	1.125	.4375	.625	1.656	7/16-20	.500		
S9930A-CFS1250	1.250	1.250	.5000	.750	2.031	1/2-20	.625		
S9930A-CFS1375		1.375							
S9930A-CFS1500	1.500	1.500	.6250	.875	2.406	5/8-18	.750		

Catalog Number (Ref.)	B ₂ Location	r Corner Radius	Max. Speed** rpm	Stud Housing Dia.		d ₂ Clamp. Dia. Min.	Max.*** Clamp. Torque lbf in.
				Min.	Max.		
S9930A-CFS0750	.250	.020	6000	.3750	.3755	.500	65
S9930A-CFS0875			5000	.4375	.4380	.594	105
S9930A-CFS1125		.039	4400	.5000	.5005	.750	165
S9930A-CFS1250	.312		3400	.6250	.6255	.891	335
S9930A-CFS1375							
S9930A-CFS1500	.375	.059					

** Limiting speeds shown are for grease lubrication. With oil lubrication, the speed can be increased by approximately 30% except for sealed versions (which are available on special order).

*** Clamping torque is based on lubricated threads. If threads are dry, double the values shown.

I
R
T
1
2
3
4
5
6
7
8
9
10
11
12
13
14
15
16