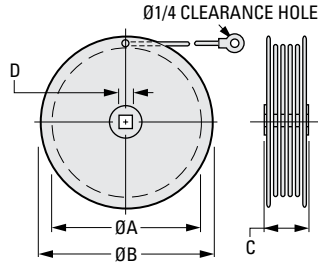
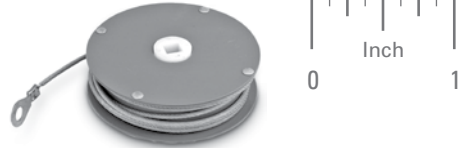


ARBOR-MOUNTED
STEEL CASE

PHONE: 516.328.3300 • FAX: 516.326.8827 • WWW.SDP-SI.COM

> MATERIAL:

- Spring-Powered Reel:**
- Cable** - Ø3/32 Galvanized Steel, Nylon Coated to Ø1/8
- Case** - Steel, Epoxy Powder Coated
- Arbor** - Acetal (POM)
- Spring** - High-Carbon Steel
- Square Stud** - Steel, Plated



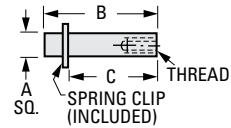
INCH COMPONENT

Catalog Number	A Dia.	B Dia.	C	D* Square	Cable Length in.	Retracting Force lbf
A 3Z53-ML1710	2-7/8	3-3/8	1	5/16	90	3.5
A 3Z53-ML1851					60	10.0
A 3Z53-ML1881					123	2.0
A 3Z53-ML1912					60	14.0
A 3Z53-ML2800	4-1/8	5	1-5/8	7/16	120	24.0
Δ A 3Z53-ML2801	5	6			108	35.0
A 3Z53-ML3976	2-7/8	3-3/8	1	5/16	60	6.0

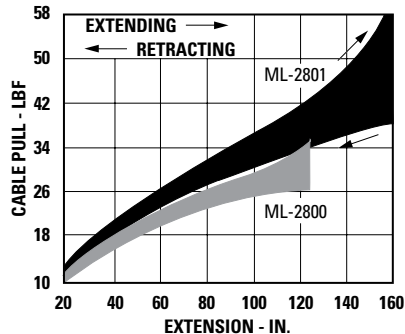
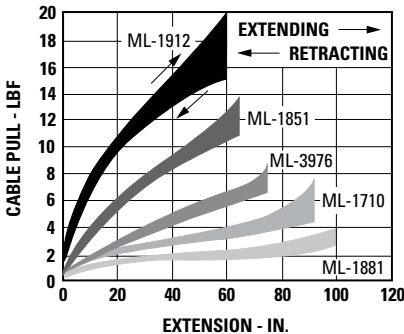
* Square clearance hole thru for mounting on square stud.

Δ This reel has three Ø.251 holes equally spaced on a Ø5.500 BC through flanges on both sides for prewind purpose.

Catalog Number **	A Square	B	C	Thread
Square Stud				
A 3C53-P11404	5/16	1-9/32	1-1/32	1/4-20
A 3C53-P10152	7/16	1-29/32	1-21/32	3/8-16



** To be discontinued when present stock is depleted.



Charts are for reference only