

ARBOR-MOUNTED
STEEL OR PLASTIC CASE

PHONE: 516.328.3300 • FAX: 516.326.8827 • WWW.SDP-SI.COM

► **MATERIAL: Spring-Powered Reel**

Cable - 7x7 Construction, Preformed Galvanized Steel, Nylon Coated

Case - ABS Plastic or Galvanized Steel

Arbor - Delrin

Spring - High Carbon Steel

► **MATERIAL: Square Stud**

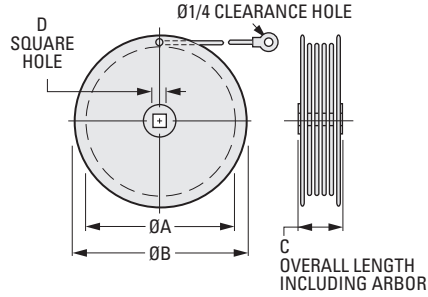
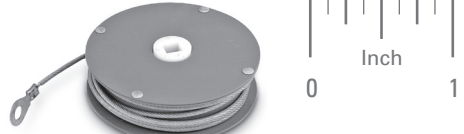
Steel, Plated

► **SPECIFICATION:**

Square clearance hole thru for mounting on square stud.

► **MODIFICATION:**

Different cable size, length or end connections are available on special order.

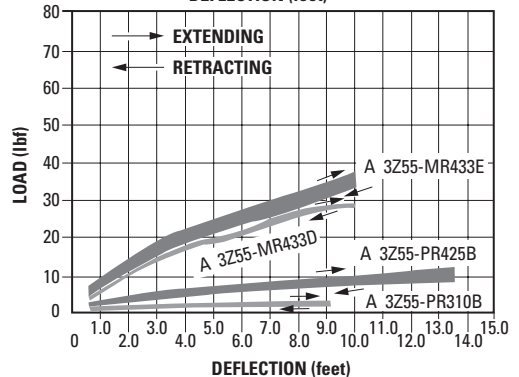
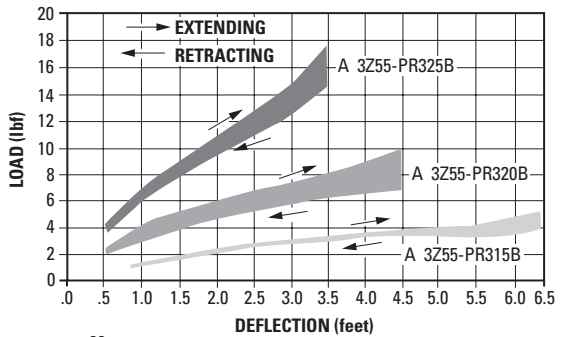
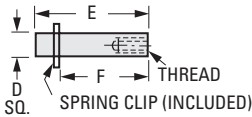


INCH COMPONENT

Catalog Number		A Dia.	B Dia.	C Arbor Length	D Square	Cable	
ABS Plastic Case	Galvanized Steel Case					Diameter Nylon Coated	Length in.
A 3Z55-PR310B	—	2-7/8	3-3/8	1-1/8	5/16	1/16	120
A 3Z55-PR315B	A 3Z55-MR315B	2-7/8	3-3/8	1-1/8	5/16	1/16	78
A 3Z55-PR320B	A 3Z55-MR320B	2-7/8	3-3/8	1-1/8	5/16	1/16	54
*A 3Z55-PR325B	A 3Z55-MR325B	2-7/8	3-3/8	1-1/8	5/16	1/16	42
A 3Z55-PR425B	A 3Z55-MR425B	4-1/8	5	1-1/8	5/16	3/32	162
—	A 3Z55-MR433D	4-1/8	5	1-3/8	7/16	3/32	120
—	A 3Z55-MR433E	4-1/8	5	1-5/8	7/16	3/32	120

* To be discontinued when present stock is depleted.

Square Stud Catalog Number		
	A 3C55-0546	A 3C55-0771
D	5/16	7/16
E	1-7/16	2-15/64
F	1-3/16	1-31/32
Thread	1/4-20	3/8-16



NOTE: These are typical curves, not maximum and minimum values.

SPRING-POWERED REELS

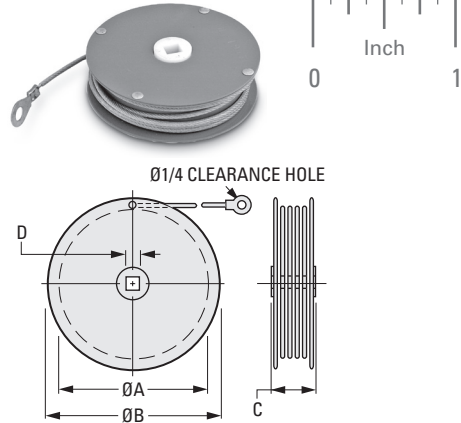


ARBOR-MOUNTED
STEEL CASE

PHONE: 516.328.3300 • FAX: 516.326.8827 • WWW.SDP-SI.COM

> MATERIAL:

- Spring-Powered Reel:**
- Cable** - Ø3/32 Galvanized Steel, Nylon Coated to Ø1/8
- Case** - Steel, Powder Coated
- Arbor** - Delrin
- Spring** - High Carbon Steel
- Square Stud** - Steel, Plated



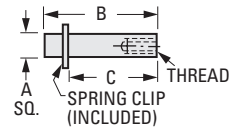
INCH COMPONENT

Catalog Number	A Dia.	B Dia.	C	D * Square	Cable Length in.	Retracting Force lbs
A 3Z53-ML1710	2-7/8	3-3/8	1	5/16	90	3.5
A 3Z53-ML1851	2-7/8	3-3/8	1	5/16	60	10.0
A 3Z53-ML1881	2-7/8	3-3/8	1	5/16	123	2.0
A 3Z53-ML1912	2-7/8	3-3/8	1	5/16	60	14.0
A 3Z53-ML2800	4-1/8	5	1-5/8	7/16	120	24.0
Δ A 3Z53-ML2801	5	6	1-5/8	7/16	108	35.0
A 3Z53-ML3976	2-7/8	3-3/8	1	5/16	60	6.0

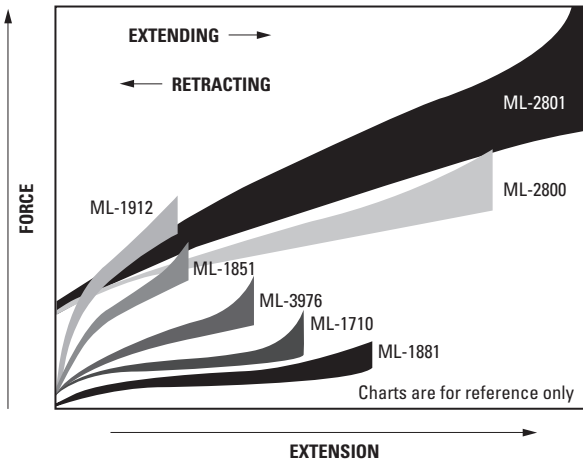
* Square clearance hole thru for mounting on square stud.

Δ This reel has three Ø.251 holes equally spaced on a Ø5.500 BC through flanges on both sides for prewind purpose.

Catalog Number **	A Square	B	C	Thread
Square Stud				
A 3C53-P11404	5/16	1-9/32	1-1/32	1/4-20
A 3C53-P10152	7/16	1-29/32	1-21/32	3/8-16



** To be discontinued when present stock is depleted.



- I
- R
- T
- 1
- 2
- 3
- 4
- 5
- 6
- 7
- 8
- 9
- 10
- 11
- 12
- 13
- 14
- 15
- 16