

HEXAGONAL THREADED

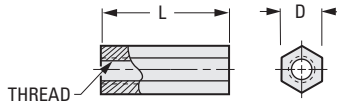
PHONE: 516.328.3300 • FAX: 516.326.8827 • WWW.SDP-SI.COM

MATERIAL:

- Aluminum - Plain
- Brass - Bright Dip
- Stainless Steel



Government approved.
Other sizes and finishes are available on special order.



INCH COMPONENT

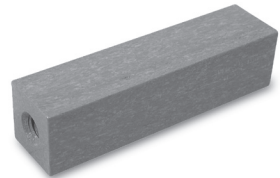
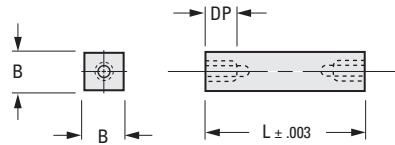
Catalog Number			L Length	D	Thread
Aluminum	Brass	Stainless Steel			
A 9A43-E44008	A 9B43-E44008	A 9X43-E44008	1/4	3/16	#4-40
A 9A43-E44012	A 9B43-E44012	A 9X43-E44012	3/8	3/16	#4-40
A 9A43-E44016	*A 9B43-E44016	A 9X43-E44016	1/2	3/16	#4-40
A 9A43-E63208	A 9B43-E63208	A 9X43-E63208	1/4	1/4	#6-32
A 9A43-E63212	—	A 9X43-E63212	3/8	1/4	#6-32
A 9A43-E63216	A 9B43-E63216	A 9X43-E63216	1/2	1/4	#6-32
A 9A43-E63220	A 9B43-E63220	A 9X43-E63220	5/8	1/4	#6-32
A 9A43-E63224	A 9B43-E63224	A 9X43-E63224	3/4	1/4	#6-32
A 9A43-E63228	A 9B43-E63228	A 9X43-E63228	7/8	1/4	#6-32
A 9A43-E63232	A 9B43-E63232	A 9X43-E63232	1	1/4	#6-32
A 9A43-E63216A	A 9B43-E63216A	A 9X43-E63216A	1/2	3/8	#6-32
A 9A43-E63228A	A 9B43-E63228A	A 9X43-E63228A	7/8	3/8	#6-32
A 9A43-E63232A	A 9B43-E63232A	A 9X43-E63232A	1	3/8	#6-32
A 9A43-E83212	A 9B43-E83212B	A 9X43-E83212	3/8	1/4	#8-32
A 9A43-E83216	A 9B43-E83216B	A 9X43-E83216	1/2	1/4	#8-32
A 9A43-E83232	A 9B43-E83232B	A 9X43-E83232	1	1/4	#8-32
A 9A43-E83212A	A 9B43-E83212	A 9X43-E83212A	3/8	3/8	#8-32
A 9A43-E83216A	A 9B43-E83216	A 9X43-E83216A	1/2	3/8	#8-32
A 9A43-E83220A	—	A 9X43-E83220A	5/8	3/8	#8-32
A 9A43-E83224A	A 9B43-E83224	A 9X43-E83224A	3/4	3/8	#8-32
A 9A43-E83228A	A 9B43-E83228	A 9X43-E83228A	7/8	3/8	#8-32
A 9A43-E83232A	A 9B43-E83232	A 9X43-E83232A	1	3/8	#8-32

* To be discontinued when present stock is depleted.

SQUARE THREADED

MATERIAL:

- Aluminum, Anodized



INCH COMPONENT

Catalog Number	L Length	B	Thread	DP
A 9A43-A063232	1	1/4	#6-32	1/4
A 9A43-A063248	1-1/2	1/4	#6-32	1/4
A 9A43-A063264	2	1/4	#6-32	1/4
A 9A43-A063280	2-1/2	1/4	#6-32	1/4
A 9A43-A083248	1-1/2	3/8	#8-32	3/8
A 9A43-A083264	2	3/8	#8-32	3/8
A 9A43-A083280	2-1/2	3/8	#8-32	3/8
A 9A43-A103264	2	1/2	#10-32	3/8
A 9A43-A103280	2-1/2	1/2	#10-32	3/8