

INTERNAL

PHONE: 516.328.3300 • FAX: 516.326.8827 • WWW.SDP-SI.COM

> MATERIAL:

Carbon Spring Steel (SAE 1065 - 1090), Oil-Dipped
Stainless Steel (PH 15-7 Mo)

> TENSILE STRENGTH:

45,000 psi

> SPECIFICATIONS:

A Tolerance:

.280 to .859 in. +.010/-0.005
.901 to 1.111 in. +.015/-0.010

G Tolerance:

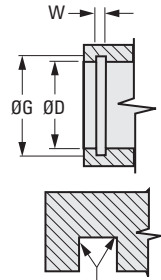
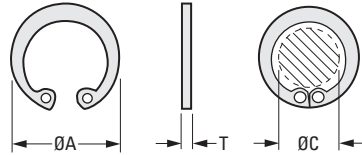
.268 to .030 in. ± .001
.397 to .796 in. ± .002
.825 to 1.066 in. ± .002

W Tolerance:

.018 in. +.002/-0.000
.029 to .046 in. +.003/-0.000

Carbon Spring Steel (SAE 1065 - 1090), Oil-Dipped - Priced Per 100 Pieces

Stainless Steel (PH 15-7 Mo) - Priced Per 10 Pieces



GROOVE DETAIL
.005 MAX.
BOTTOM RADIUS

INCH COMPONENT

Catalog Number	D Housing Dia.	A Free Dia.	C Ring Clear. Dia.	G Groove Dia.	W Groove Width	T Ring Thick. ± .002	Thrust Strength lbf	
							Ring	Groove
Carbon Spring Steel (SAE 1065 - 1090), Oil-Dipped								
A 9Q28-25	.250	.280	.11	.268	.018	.015	1280	320
A 9Q28-31	.312	.346	.17	.330	.018	.015	1600	395
A 9Q28-37	.375	.415	.20	.397	.029	.025	3500	580
A 9Q28-43	.438	.482	.23	.461	.029	.025	4100	740
A 9Q28-45	.453	.498	.25	.477	.029	.025	4200	765
A 9Q28-50	.500	.548	.26	.530	.039	.035	6500	1060
A 9Q28-51	.512	.560	.27	.542	.039	.035	6700	1085
A 9Q28-56	.562	.620	.28	.596	.039	.035	7400	1350
A 9Q28-62	.625	.694	.34	.665	.039	.035	8200	1760
A 9Q28-68	.688	.763	.40	.732	.039	.035	9000	2140
A 9Q28-75	.750	.831	.44	.796	.039	.035	9900	2400
A 9Q28-77	.777	.859	.47	.825	.046	.042	15000	2600
A 9Q28-81	.812	.901	.48	.862	.046	.042	16000	2800
A 9Q28-86	.866	.961	.53	.920	.046	.042	17000	3300
A 9Q28-87	.875	.971	.54	.931	.046	.042	17000	3400
A 9Q28-90	.901	1.000	.57	.959	.046	.042	17500	3600
A 9Q28-93	.938	1.041	.60	1.000	.046	.042	18000	4100
A 9Q28-100	1.000	1.111	.67	1.066	.046	.042	19000	4700
Stainless Steel (PH 15-7 Mo)								
A 9Y28-25	.250	.280	.11	.268	.018	.015	1280	320
A 9Y28-31	.312	.346	.17	.330	.018	.015	1600	395
A 9Y28-37	.375	.415	.20	.397	.029	.025	3500	580
A 9Y28-50	.500	.548	.26	.530	.039	.035	6500	1060
A 9Y28-62	.625	.694	.34	.665	.039	.035	8200	1760
A 9Y28-75	.750	.831	.44	.796	.039	.035	9900	2400
A 9Y28-87	.875	.971	.54	.931	.046	.042	17000	3400
A 9Y28-100	1.000	1.111	.67	1.066	.046	.042	19000	4700

I
R
T
1
2
3
4
5
6
7
8
9
10
11
12
13
14
15
16