

ANTI-BACKLASH ACME NUTS

SDPSI

> MATERIAL:

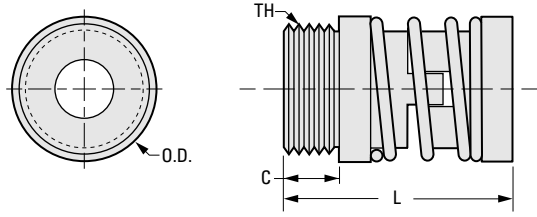
Acetal with PTFE

PHONE: 516.328.3300 • FAX: 516.326.8827 • WWW.SDP-SI.COM

> TEMPERATURE RANGE:

32° F to 180° F

For use with Acme Lead Screw
AB11SA-...



INCH COMPONENT

Catalog Number	Screw Size	Number of Starts	Lead in.	Efficiency %	O.D.	L	
						Min.	Max.
AB22SN-25161AB	1/4-16	1	.063	48	.625	1.125	1.250
AB22SN-25201AB	1/4-20		.050	41			
AB22SN-31082AB	5/16-8	2	.250	72	.750	1.160	1.340
AB22SN-31084AB		4	.500	80			
AB22SN-31122AB	5/16-12	2	.167	65			
AB22SN-37081AB	3/8-8	stub	.125	53			
AB22SN-37084AB		4	.500	79			
AB22SN-37101AB	3/8-10	1	.100	49			
AB22SN-37102AB		2	.200	65			
AB22SN-37114AB	3/8-11	4	.375	75			
AB22SN-37121AB	3/8-12	1	.083	44			
AB22SN-37122AB		2	.167	60			
AB22SN-37161AB	3/8-16	1	.063	36			

Catalog Number (Ref.)	C	TH	Preload lbf	Design Load lbf	Max. Static Load lbf	Drag Torque oz. in.	Use with Flange
AB22SN-25161AB	.187	9/16-18	1-3	25	225	2-4	AB250F-025
AB22SN-25201AB				50			AB250F-037
AB22SN-31082AB	.250	5/8-18	2-5	70	350		AB250F-037
AB22SN-31084AB							
AB22SN-31122AB				70			
AB22SN-37081AB							
AB22SN-37084AB							
AB22SN-37101AB							
AB22SN-37102AB							
AB22SN-37114AB							
AB22SN-37121AB							
AB22SN-37122AB							
AB22SN-37161AB							

Continued on the next page

- I
- R
- T
- 1
- 2
- 3
- 4
- 5
- 6
- 7
- 8
- 9
- 10
- 11
- 12
- 13
- 14
- 15
- 16

ANTI-BACKLASH ACME NUTS

SDPSI

> MATERIAL:

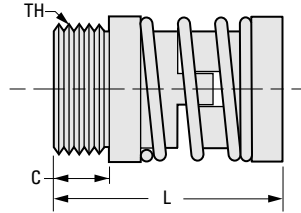
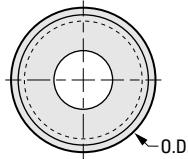
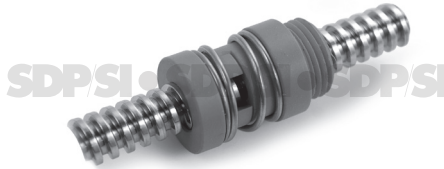
Acetal with PTFE

PHONE: 516.328.3300 • FAX: 516.326.8827 • WWW.SDP-SI.COM

> TEMPERATURE RANGE:

32° F to 180° F

For use with Acme Lead Screw
AB11SA-...



INCH COMPONENT

Catalog Number	Screw Size	Number of Starts	Lead in.	Efficiency %	O.D.	L	
						Min.	Max.
AB22SN-43082AB	7/16-8	2	.250	65	1.000	1.700	2.000
AB22SN-50042AB	1/2-4		.500	75			
AB22SN-50101AB	1/2-10	1	.100	41			
AB22SN-50102AB		2	.200	57			
AB22SN-62101AB	5/8-10	1	.100	35			
AB22SN-62102AB		2	.200	51			
AB22SN-75061AB	3/4-6	1	.167	44	1.750	2.500	3.000
AB22SN-75081AB	3/4-8		.125	36			
AB22SN-75101AB	3/4-10		.100	31			
AB22SN-10008AB	1-8		.125	29			
AB22SN-10010AB	1-10		.100	25			

Catalog Number (Ref.)	C	TH	Preload lbf	Design Load lbf	Max. Static Load lbf	Drag Torque oz. in.	Use with Flange				
AB22SN-43082AB	.375	15/16-16	4-9	100	500	3-5	AB250F-050				
AB22SN-50042AB				150	750	5-8					
AB22SN-50101AB				160	800	7-10					
AB22SN-50102AB				.600	1-9/16-18	10-20		300	1500	15-20	AB250F-100
AB22SN-62101AB								400	2000		
AB22SN-62102AB											

Continued from the previous page

- I
- R
- T
- 1
- 2
- 3
- 4
- 5
- 6
- 7
- 8
- 9
- 10
- 11
- 12
- 13
- 14
- 15
- 16