

SHORT SERIES FLEXIBLE HELICAL COUPLINGS



SET SCREW TYPE
ZERO BACKLASH

PHONE: 516.328.3300 • FAX: 516.326.8827 • WWW.SDP-SI.COM

► **MATERIAL:**

Coupling - 7075-T6 Aluminum
Set Screws - Alloy Steel

► **FINISH:**

Clear Anodized

► **MISALIGNMENT COMPENSATION:**

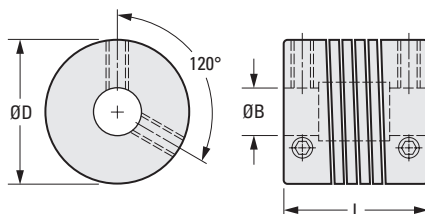
Max. Angular Offset: 5°
Max. Lateral Offset: .010
Max. Axial Motion: ± .010

► **FEATURES:**

One-piece construction.
Shaft relief.
Nonmagnetic.
Constant velocity.
Adapts to high- and low-speed applications.
Misalignment compensation.

For NONREVERSING applications, the torque rating is 1/2.
For REVERSING applications, the torque rating is 1/4.

Bore diameter combinations are available on special order.



INCH COMPONENT

Catalog Number	D O.D.	B Bore +.002 -.000	L Length ± .01	Screw Size	Momentary* Dynamic Torque lbf in.	Torsional Deflection Arc Min. / lbf in.	Inertia Δ x 10 ⁻⁵ lbf in. sec. ²
S50HAA-037P0303	3/8	.094	.37	#1-72	1.2	252	.016
S50HAA-050P0303	1/2	.094	.50	#2-56	3.7	58.8	.069
S50HAA-050P0404		.125			3.5	78	
S50HAA-062P0404	5/8	.125	.62	#4-40	7.1	30.6	.21
S50HAA-062P0505		.157			6.7	39.6	
S50HAA-062P0606		.188			6.2	51.6	
S50HAA-075P0404	3/4	.125	.75	#6-32	10	17.4	.54
S50HAA-075P0505		.157			10	21.6	
S50HAA-075P0606		.188			9.8	26.4	
S50HAA-075P0808		.250			8.6	40.8	
S50HAA-087P0606	7/8	.188	.87	#10-24	19	12	1.2
S50HAA-087P0808		.250			17	16.8	
S50HAA-087P1010		.313			15	24.6	
S50HAA-100P0808	1	.250	1.00	#10-24	27	10.2	2.3
S50HAA-100P1010		.313			24	14.4	
S50HAA-100P1212	1-1/8	.375	1.12	#10-24	22	19.8	4.1
S50HAA-112P0808		.250			43	5.64	
S50HAA-112P1010		.313			40	7.2	
S50HAA-112P1212		.375			37	10.2	
S50HAA-112P1616		.500			28	19.2	

* Torque listed is maximum momentary value.

Δ Inertia is based on the smallest standard bore diameter.

6-30
D820

REVISED:
05/17/23

1

R

T

1

2

3

4

5

6

7

8

9

10

11

12

13

14

15

16