

EASY INSTALLATION  
READILY REPOSITIONED

PHONE: 516.328.3300 • FAX: 516.326.8827 • WWW.SDP-SI.COM

► **MATERIAL:**

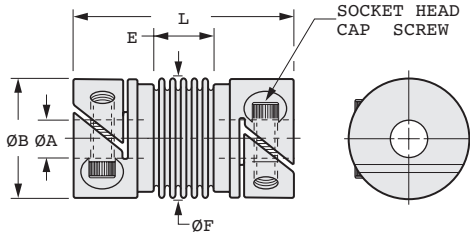
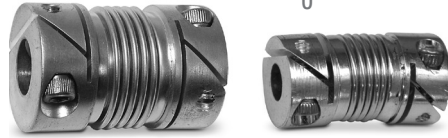
- Hubs - Brass
- Bellows - Phosphor Bronze
- Socket Head Screws - 300 Series Stainless Steel
- Finish - Tin Plate

► **FEATURES:**

- Absorbs end play in shafts.
- Allows looser tolerances in mounting components.
- Corrects for angular and parallel axis misalignment.
- Zero backlash.
- Constant angular velocity.
- Dampens vibration and noise.
- Fairloc® eliminates marred shafts.

Fairloc® hubs require controlled shaft tolerances. Suggested clearance fit between the bore and shaft is .0001 / .0008.

Other bores, finishes available on special order.



## INCH COMPONENT

| Catalog Number   | A Bore<br>+.001<br>-.000 | F Bellows Diameter<br>± .015 | E Ref. Active Bellows Length<br>± .015 | B Hub Diameter<br>± .010 | L Overall Length<br>± .06 | Screw Size |
|------------------|--------------------------|------------------------------|--|--------------------------|---------------------------|------------|
| S50FP9-FBC12015  | .1200                    | 15/32                        | .242                                   | .433                     | .92                       | #2-56      |
| S50FP9-FBC12515  | .1250                    |                              |  | .433                     |                           |            |
| S50FP9-FBC18715  | .1875                    |                              |  | .495                     |                           |            |
| S50FP9-FBC18715A | .1878 / .1873            | 15/32                        | .230                                   | .562                     | 1.00                      | #4-40      |
| S50FP9-FBC25021  | .2500                    | 21/32                        | .325                                   | .610                     | 1.16                      | #4-40      |
| S50FP9-FBC31221  | .3125                    |                              |  | .682                     |                           |            |
| S50FP9-FBC37527  | .3750                    |                              |  | .870                     |                           |            |

| Catalog Number<br>(Ref. Only) | Max. Torque<br>ozf in. | Max. Angular<br>Offset | Max. Lateral<br>Offset | Max. Axial<br>Motion | Torsional<br>Deflection @<br>Max. Load |
|-------------------------------|------------------------|------------------------|------------------------|----------------------|--|
| S50FP9-FBC12015               | 120                    | 5°                     | .015                   | +.015 / -.030        | 1.2°                                   |
| S50FP9-FBC12515               |                        |                        |                        |                      | 1.5°                                   |
| S50FP9-FBC18715               |                        |                        |                        |                      | 1.5°                                   |
| S50FP9-FBC18715A              | 180                    | 4°                     | .010                   | +.012 / -.024        | .8°                                    |
| S50FP9-FBC25021               | 200                    | 6°                     | .015                   | +.020 / -.040        | 1.4°                                   |
| S50FP9-FBC31221               |                        |                        |                        |                      | 1.5°                                   |
| S50FP9-FBC37527               |                        |                        |                        |                      | 1.5°                                   |