

PILLOW BLOCK-MOUNTED NEEDLE ROLLER BEARINGS

SDP/SI

SELF-ALIGNING TO $\pm 5^\circ$
 SELF-LUBRICATING
 CORROSION-RESISTANT
 LIGHTWEIGHT

PHONE: 516.328.3300 • FAX: 516.326.8827 • WWW.SDP-SI.COM

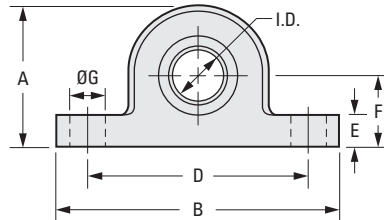
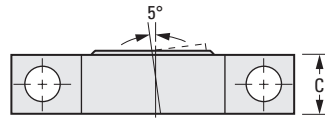
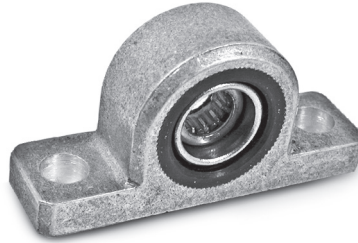


> MATERIAL:

Bearing - Drawn Cup Needle Roller
Pillow Block - Sintered Aluminum

> OPERATING TEMPERATURE:

-22°F to +212°F



INCH COMPONENT

Catalog Number	Nom. I.D.	Recommended Shaft Diameter		A Overall Height	B Overall Length	C Overall Width
		Max.	Min.			
A 7Z33-PB250N	1/4	.2500	.2495	1-1/8	2-1/4	7/16
A 7Z33-PB312N	5/16	.3125	.3120			5/8
A 7Z33-PB375N	3/8	.3750	.3745	1-9/16	3-1/4	25/32
A 7Z33-PB500N	1/2	.5000	.4995			7/8
A 7Z33-PB625N	5/8	.6250	.6245	2-9/16	5	29/32
A 7Z33-PB750N	3/4	.7500	.7495			

Catalog Number (Ref.)	D Mounting Distance	E Nominal Flange Thickness	F Height To Centerline	G Mounting Hole Dia.	Max. Speed rpm	Max. Radial Load lbf
A 7Z33-PB250N	1-3/4	1/4	9/16	9/32	44000	210
A 7Z33-PB312N					35500	
A 7Z33-PB375N					29500	
A 7Z33-PB500N	2-1/2	5/16	3/4	11/32	22000	380
A 7Z33-PB625N					17600	330
A 7Z33-PB750N	4	9/16	1-1/4	9/16	14700	1000

