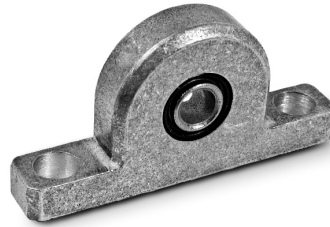


# PILLOW BLOCK-MOUNTED SINTERED BRONZE BEARINGS



SELF-ALIGNING TO  $\pm 5^\circ$   
 SELF-LUBRICATING  
 CORROSION-RESISTANT  
 LIGHTWEIGHT

PHONE: 516.328.3300 • FAX: 516.326.8827 • WWW.SDP-SI.COM

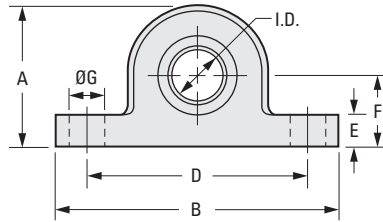
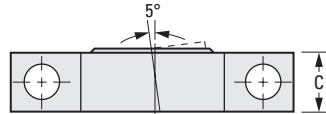


**MATERIAL:**

**Bearing** - Sintered Bronze SAE 840  
**Pillow Block** - Sintered Aluminum

**OPERATING TEMPERATURE:**

-20°F to +200°F



**INCH COMPONENT**

Catalog Number	Nom. I.D.	I.D. Actual		A Overall Height	B Overall Length	C Overall Width
		Max.	Min.			
A 7Z31-PB0250B	1/4	.2513	.2508	1-1/8	2-1/4	3/8
A 7Z31-PB0312B	5/16	.3140	.3133	1-1/8	2-1/4	7/16
A 7Z31-PB0375B	3/8	.3765	.3758	1-1/8	2-1/4	7/16
A 7Z31-PB0500B	1/2	.5017	.5010	1-1/8	2-1/4	5/8
A 7Z31-PB0625B	5/8	.6270	.6260	1-15/16	3-1/4	25/32
A 7Z31-PB0750B	3/4	.7520	.7510	1-9/16	3-1/4	7/8
A 7Z31-PB0875B	7/8	.8780	.8760	1-15/16	4	29/32
A 7Z31-PB1000B	1	1.0030	1.0010	2-9/16	5	29/32

Catalog Number (Ref.)	D Mounting Distance	E Nominal Flange Thickness	F Height To Centerline	G Mounting Hole Dia.	Max. Speed rpm	Max. Radial Load lbf
A 7Z31-PB0250B	1-3/4	1/4	9/16	9/32	15270	210
A 7Z31-PB0312B	1-3/4	1/4	9/16	9/32	12240	210
A 7Z31-PB0375B	1-3/4	1/4	9/16	9/32	10180	220
A 7Z31-PB0500B	1-3/4	1/4	9/16	9/32	7640	220
A 7Z31-PB0625B	2-1/2	5/16	3/4	11/32	6110	380
A 7Z31-PB0750B	2-1/2	5/16	3/4	11/32	5090	330
A 7Z31-PB0875B	3-1/8	13/32	1	11/32	4850	380
A 7Z31-PB1000B	4	9/16	1-1/4	9/16	4500	1000