

CLOSED SERIES
SELF-ALIGNING
LOW COST

PHONE: 516.328.3300 • FAX: 516.326.8827 • WWW.SDP-SI.COM



> MATERIAL:

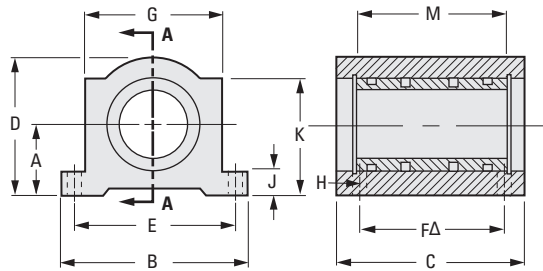
Body - Anodized 6061-T6 Aluminum
Bearing - Frelon® Lined Aluminum, Self-Lubricating

> OPERATING TEMPERATURE:

-400°F to +500°F

> SPECIFICATIONS:

Bore Tolerance:
.250 to 1.250 +.003/+ .002



SECTION A-A
Δ DISTANCE BETWEEN BOLTS, CENTER-TO-CENTER

INCH COMPONENT

Catalog Number	Bore	A ± .001	B Base Width	C Length	D Height	E ± .01	F ± .01
S61PSC-025F11875	.250	.437	1.625	1.188	.813	1.312	.750
S61PSC-038F13125	.375	.500	1.750	1.313	.938	1.437	.875
S61PSC-050F16875	.500	.687	2.000	1.688	1.250	1.688	1.000
S61PSC-063F19375	.625	.875	2.500	1.938	1.625	2.125	1.125
S61PSC-075F20625	.750	.937	2.750	2.063	1.750	2.375	1.250
S61PSC-100F28125	1.000	1.187	3.250	2.813	2.188	2.875	1.750
S61PSC-125F36250	1.250	1.500	4.000	3.625	2.813	3.500	2.000

Catalog Number (Ref.)	G Body Width	H		J	K	M Groove Spacing	Max.* Load Rating lbf
		Bolt	Hole				
S61PSC-025F11875	1.000	#6	5/32	.188	.750	.750	300
S61PSC-038F13125	1.125			.188	.875	.875	510
S61PSC-050F16875	1.375			.250	1.125	1.250	975
S61PSC-063F19375	1.750	#8	3/16	.281	1.438	1.500	1470
S61PSC-075F20625	1.875			.313	1.563	1.625	1905
S61PSC-100F28125	2.375			.375	1.938	2.250	3525
S61PSC-125F36250	3.000			.438	2.500	2.625	5145

* Maximum speed is 400 ft/min.; maximum PV is 10000 dry.

