

# FLANGE-MOUNTED NEEDLE ROLLER BEARINGS



SELF-ALIGNING TO  $\pm 5^\circ$   
FLANGE-MOUNTED

PHONE: 516.328.3300 • FAX: 516.326.8827 • WWW.SDP-SI.COM

**> MATERIAL:**

**Bearing** - Drawn Cup Needle  
**Housing** - Carbon Steel, Black Oxide Finish

**> OPERATING TEMPERATURE:**

-22°F to +212°F

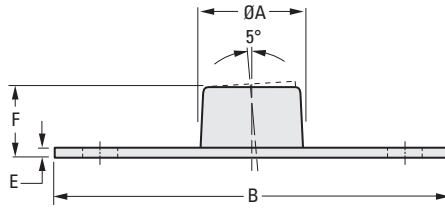
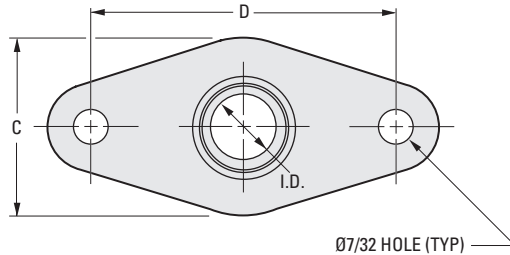
**> SHAFT REQUIREMENTS:**

Any material, Rc 58 to 64  
with a 16  $\mu\text{in.}$  or finer finish.



**SHAFT DIAMETERS:**

Nominal Shaft Diameter	Maximum Diameter	Minimum Diameter
1/4	.2500	.2495
5/16	.3125	.3120
3/8	.3750	.3745
1/2	.5000	.4995
5/8	.6250	.6245



**INCH COMPONENT**

Catalog Number	Nom. I.D.	A Clearance Hole Diameter (Ref.)	B Overall Length	C Overall Width	D Mounting Distance
A 7Z56-BFM250N	1/4	21/32	2.10	1.19	1.53
A 7Z56-BFM312N	5/16	27/32	1.78	1.25	1.22
A 7Z56-BFM375N	3/8				
A 7Z56-BFM500N	1/2	1-3/32	2.34	1.56	1.78
A 7Z56-BFM625N	5/8	1-9/32		1.85	

Catalog Number (Ref.)	E Nominal Flange Thickness	F Height	Max. Speed rpm	Max. Radial Load lbf
A 7Z56-BFM250N	.09	.46	44000	600
A 7Z56-BFM312N		.64	35500	
A 7Z56-BFM375N		.77	29500	
A 7Z56-BFM500N		.89	22000	950
A 7Z56-BFM625N				17600

5-77  
D820

REV:  
2/27/23

