

NEEDLE ROLLER PRESSBEARINGS



PRESS-FIT INSTALLATION
SELF-ALIGNING TO $\pm 5^\circ$

PHONE: 516.328.3300 • FAX: 516.326.8827 • WWW.SDP-SI.COM



> MATERIAL:

- Bearing** - Drawn Cup Needle
- Housing** - Carbon Steel, Black Oxide Finish

> OPERATING TEMPERATURE:

-22°F to +212°F

> FEATURES:

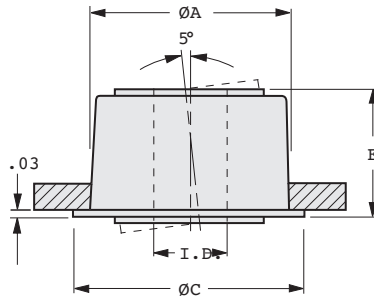
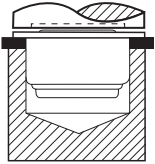
- High-speed, high-load.
- No precision holes required.
- Major assembly and production savings.

> SHAFT REQUIREMENTS:

Any material, Rc 58 to 64
with a 16 μ in. or finer finish.

> INSTALLATION NOTES:

- The punch must be relieved to accommodate protruding insert.
- DO NOT PRESS BEARING ON INSERT!**



SHAFT DIAMETERS

Nominal Shaft Diameter	Maximum Diameter	Minimum Diameter
1/8	.1250	.1247
3/16	.1875	.1872
1/4	.2500	.2495
5/16	.3125	.3120
3/8	.3750	.3745
1/2	.5000	.4995
5/8	.6250	.6245

INCH COMPONENT

Catalog Number	Nom. I.D.	A Panel Hole Dia. +.003 / -.000	C Flange Dia.	E Height	Max. Speed rpm	Max. Radial Load lbf
A 7Z47-PSN125	1/8	.500	.56	.37	31500	360
A 7Z47-PSN187	3/16	.625	.69	.43	21000	430
A 7Z47-PSN250	1/4				44000	
A 7Z47-PSN312	5/16	.812	.88	.60	35500	600
A 7Z47-PSN375	3/8				29500	
A 7Z47-PSN500	1/2	1.063	1.13	.77	22000	950
A 7Z47-PSN625	5/8	1.250	1.31	.85	17600	1830

5-76
D820

REV:
3/15/23

1

R

T

1

2

3

4

5

6

7

8

9

10

11

12

13

14

15

16