

SELF-ALIGNING TO $\pm 5^\circ$ OR NONALIGNING

PHONE: 516.328.3300 • FAX: 516.326.8827 • WWW.SDP-SI.COM

› MATERIAL:

Bearing - Drawn Cup Needle
Housing - Carbon Steel, Black Oxide Finish

› OPERATING TEMPERATURE:

-22°F to +212°F

› FEATURES:

High-speed, High-load applications.
 Knurling ensures secure self-clinching.
 Simple, quick installation.
 Major assembly and production savings.
 Mounting blocks not necessary.

› SHAFT REQUIREMENTS:

Any material, Rc 58 to 64,
 with a 16 μ in. or finer finish

SHAFT DIAMETERS

SELF-ALIGNING & NONALIGNING

Nominal Shaft Diameter	Maximum Diameter	Minimum Diameter
1/8	.1250	.1247
3/16	.1875	.1872
1/4	.2500	.2495
5/16	.3125	.3120
3/8	.3750	.3745
1/2	.5000	.4995
5/8	.6250	.6245
3/4	.7500	.7495

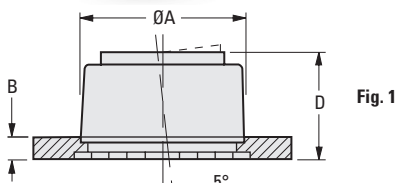


Fig. 1

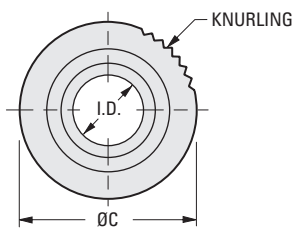
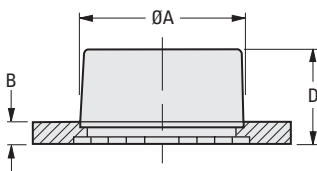


Fig. 2



INCH COMPONENT

Catalog Number	Nom. I.D.	A Panel Hole Dia. +.003 -0.000	B Min. Panel Thickness	C Knurl O.D.	D Height	Max. Speed rpm	Max. Radial Load lbf
Fig. 1 Self-Aligning							
A 7Z46-FSN125	1/8	.500	.04	.55	.40	31500	360
A 7Z46-FSN187	3/16	.625	.06	.67	.46	21000	430
A 7Z46-FSN250	1/4	.625	.06	.67	.46	44000	430
A 7Z46-FSN312	5/16	.812	.06	.87	.64	35500	600
A 7Z46-FSN375	3/8	.812	.06	.87	.64	29500	600
A 7Z46-FSN500	1/2	1.063	.075	1.10	.77	22000	950
A 7Z46-FSN625	5/8	1.250	.09	1.30	.89	17600	1830
Fig. 2 Nonaligning							
A 7Z48-FSN125	1/8	.375	.04	.42	.312	31500	360
A 7Z48-FSN187	3/16	.500	.04	.55	.500	21000	430
A 7Z48-FSN250	1/4	.625	.06	.67	.440	44000	430
A 7Z48-FSN312	5/16	.625	.06	.67	.440	35500	600
A 7Z48-FSN375	3/8	.812	.06	.87	.440	29500	600
A 7Z48-FSN500	1/2	.875	.06	.92	.500	22000	950
A 7Z48-FSN625	5/8	1.063	.075	1.10	.625	17600	1830
A 7Z48-FSN750	3/4	1.250	.09	1.30	.625	14700	1830

See next page for installation data