

PRESS-FIT INSTALLATION
 SELF-ALIGNING TO $\pm 5^\circ$
 SELF-LUBRICATING

PHONE: 516.328.3300 • FAX: 516.326.8827 • WWW.SDP-SI.COM



> MATERIAL:

Bearing - Oil-Impregnated Sintered Bronze
Retainer - Carbon Steel, Black Oxide Finish

> OPERATING TEMPERATURE:

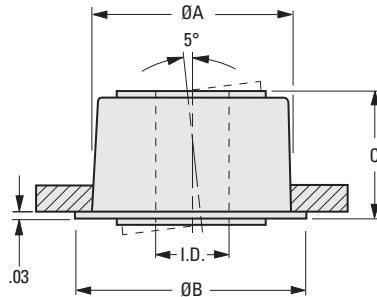
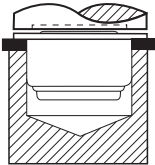
-20°F to +200°F

> SHAFT REQUIREMENTS:

Any material, R_s 95 min., with a 16 μ m. or finer finish.

> INSTALLATION NOTES:

1. The punch must be relieved to accommodate protruding insert.
2. **DO NOT PRESS BEARING ON INSERT!**



INCH COMPONENT

Catalog Number	Nom. I.D.	Actual I.D.		A Panel Hole Dia. $+.003$ $-.000$	B Flange Dia.	C Height Along Centerline	Max. Speed rpm	Max. Radial Load lbf
		Min.	Max.					
A 7Z41-PSB125	1/8	.1255	.1260	.344	.41	.27	30550	70
A 7Z41-PSB187	3/16	.1883	.1888	.500	.56	.38	20310	180
A 7Z41-PSB250	1/4	.2508	.2513	.625	.69	.43	15270	360
A 7Z41-PSB312	5/16	.3133	.3140				12240	430
A 7Z41-PSB375	3/8	.3758	.3765				10180	

I
R
T
1
2
3
4
5
6
7
8
9
10
11
12
13
14
15
16