

CLIP BEARINGS • DOUBLE FLANGE



FOR USE WITH SHEET METAL PLATES

PHONE: 516.328.3300 • FAX: 516.326.8827 • WWW.SDP-SI.COM

> MATERIAL:

M250® Polymer

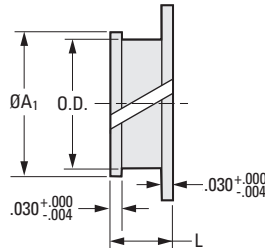
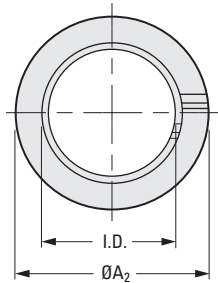
> OPERATING TEMPERATURE:

Continuous: -40°F to +176°F

Intermittent: +338°F

> FEATURES:

- Easy Installation.
- Maintenance-free & self-lubricating.
- Smooth operation.
- Good wear resistance.
- Used for both rotational & linear movements.
- Lightweight.



INCH COMPONENT

Catalog Number	I.D.	O.D.	Flange Diameter		L Length +.008 -.000	Recommended				
			A ₁	A ₂		Housing Bore		Shaft Size		Sheet Metal Thickness
						Max.	Min.	Max.	Min.	
S99GMC-192514	3/16	.2343	1/4	5/16	.138	.2414	.2343	.1875	.1865	.040 - .075
S99GMC-192520					.200		.2272			.072 - .135
S99GMC-253414	1/4	.3125	11/32	7/16	.138	.3212	.3125	.2500	.2490	.040 - .075
S99GMC-253420					.200		.3038			.072 - .135
S99GMC-314114	5/16	.375	13/32	1/2	.138	.3834	.3750	.3125	.3115	.040 - .075
S99GMC-314120					.200		.3663			.072 - .135
S99GMC-384714	3/8	.4375	15/32	9/16	.138	.4481	.4375	.3750	.3740	.040 - .075
S99GMC-384720					.200		.4269			.072 - .135
S99GMC-445314	7/16	.500	17/32	5/8	.138	.5106	.5000	.4375	.4365	.040 - .075
S99GMC-445320					.200		.4894			.072 - .135
S99GMC-505914	1/2	.5625	19/32	11/16	.138	.5731	.5625	.5000	.4990	.040 - .075
S99GMC-505920					.200		.5519			.072 - .135
S99GMC-637214	5/8	.6875	23/32	7/8	.138	.6981	.6875	.6250	.6240	.040 - .075
S99GMC-637220					.200		.6769			.072 - .135
S99GMC-758414	3/4	.8125	27/32	1.00	.138	.8255	.8125	.7500	.7490	.040 - .075
S99GMC-758420					.200		.7995			.072 - .135

5-56
D820

REV:
3/6/23

- I
- R
- T
- 1
- 2
- 3
- 4
- 5
- 6
- 7
- 8
- 9
- 10
- 11
- 12
- 13
- 14
- 15
- 16