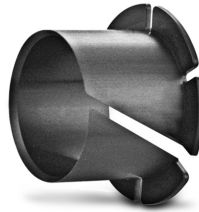


# CLIP BEARINGS WITH BEVELED EDGES



LOW CLEARANCE  
 MAINTENANCE-FREE  
 ECONOMICAL  
 HIGH PRECISION  
 HIGH WEAR RESISTANCE

PHONE: 516.328.3300 • FAX: 516.326.8827 • WWW.SDP-SI.COM



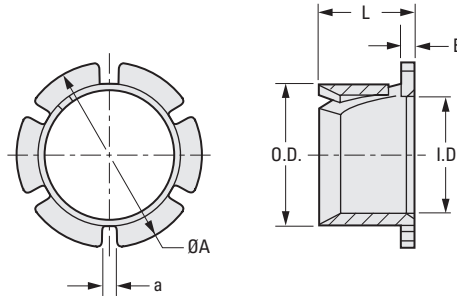
**> MATERIAL:**

M250® Polymer

**> OPERATING TEMPERATURE:**

Continuous: -40°F to +176°F

Intermittent: +338°F



## INCH COMPONENT

Catalog Number	I.D.	O.D.	L Length	A Flange Dia.	B Flange Width	a	Recommended			
							Housing Bore		Shaft Size	
							Max.	Min.	Max.	Min.
S99GMY-019023188	3/16	.234	3/16	5/16	.025	.039	.2339	.2268	.1875	.1865
S99GMY-025030250	1/4	.296	1/4	13/32			.2965	.2878	.2500	.2490
S99GMY-031037313	5/16	.374	5/16	1/2	.3744		.3657	.3125	.3115	
S99GMY-038044375	3/8	.437	3/8	19/32	.4370		.4264	.3750	.3740	
S99GMY-044050438	7/16	.499	7/16	21/32	.4996		.4890	.4375	.4365	
S99GMY-050075500	1/2	.562	1/2	3/4	.5618		.5512	.5000	.4990	
S99GMY-063069625	5/8	.687	5/8	15/16	.6870		.6724	.6250	.6240	
S99GMY-075113750	3/4	.812	3/4	1-1/8	.8118		.7988	.7500	.7490	
S99GMY-088144875	7/8	.937	7/8	1-5/16	.9370		.9240	.8750	.8740	
S99GMY-100150875	1	1.093		1-1/2	.045		1.0933	1.0803	1.0000	.9985

