

SELF-LUBRICATING
OIL-IMPREGNATED

PHONE: 516.328.3300 • FAX: 516.326.8827 • WWW.SDP-SI.COM



> MATERIAL:

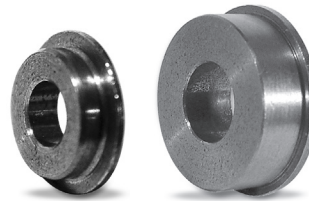
Porous Sintered Bronze Per MIL-B-5687 Type 1

> LUBRICATION:

Vacuum-impregnated with oil per MIL-L-6085

> FEATURES:

Economical replacement for ball bearings.
Dimensioned to be readily interchangeable
with comparable ball bearings.

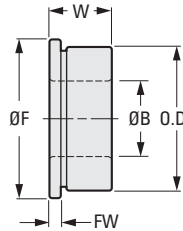


> SPECIFICATIONS:

O.D. concentric to bore within .0002.
Faces square to bore within .0003.

$$\text{Load} = \frac{\text{Load Speed Rating}}{\text{rpm}} = \text{lbf}$$

Special bores / O.D.'s available on special order.
Other lubricants available on special order.



INCH COMPONENT

Catalog Number	Shaft Size +.0000 -.0003	B Bore ± .0002	O.D. +.0000 -.0005	W Width +.000 -.005	F Flange Dia. ± .005	FW Flange Width +.000 -.002	Load Speed Rating lbf x rpm
S99BP4-FB041207	1/16	.0627	.1876	.1094	.234	.031	21000
S99BP4-FB041606			.2501	.0937	.296	.023	18000
S99BP4-FB051606	5/64	.0783	.1876	.1406	.234	.031	27000
S99BP4-FB051609				.0625		.018	12000
S99BP4-FB061204	3/32	.0939	.1876	.0937	.234	.031	18000
S99BP4-FB061206				.023		21000	
S99BP4-FB062007	3/32	.0939	.3126	.1094	.359	.031	27000
S99BP4-FB062007A				.1406		.023	21000
S99BP4-FB062009	3/32	.0939	.3126	.1406	.359	.031	27000
S99BP4-FB081606				.0937		.296	.023
S99BP4-FB081607	1/8	.1252	.2501	.1094	.296	.031	21000
S99BP4-FB082007				.1406		.359	.023
S99BP4-FB082009	1/8	.1252	.3126	.1094	.359	.031	27000
S99BP4-FB082407				.1406		.422	.023
S99BP4-FB082409	1/8	.1252	.3751	.1094	.422	.023	21000
S99BP4-FB102007				.1406		.359	.031
S99BP4-FB102008	5/32	.1564	.3126	.1094	.359	.023	21000
S99BP4-FB102008				.1250		.036	24000
S99BP4-FB122407	3/16	.1877	.3751	.1094	.422	.023	21000
S99BP4-FB122408				.1250		.031	24000
S99BP4-FB122408A	3/16	.1877	.3751	.1250	.422	.023	24000
S99BP4-FB123210				.1562		.565	.042
S99BP4-FB123212	3/16	.1877	.5001	.1960	.565	.042	37000
S99BP4-FB162408				.3751		.422	.023
S99BP4-FB162408A	3/16	.1877	.3751	.1250	.422	.036	24000
S99BP4-FB163208				.023		24000	
S99BP4-FB163212	1/4	.2502	.5001	.1875	.547	.045	35000
S99BP4-FB164012				.6251		.690	.042
S99BP4-FB204416	5/16	.3127	.6876	.2500	.750	.062	47000
S99BP4-FB245618	3/8	.3752	.8751	.2810	.969	.062	50000
S99BP4-FB327220	1/2	.5002	1.1251	.3125	1.250	.062	50000