

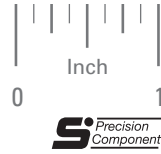
PRECISION SERIES

PHONE: 516.328.3300 • FAX: 516.326.8827 • WWW.SDP-SI.COM

SELF-LUBRICATING

PERFORMANCE COMPARES TO PRELOADED BALL BEARINGS

LOW COST



**> MATERIAL:**

**Body** - Aluminum, Anodized  
**Liner** - Bonded Frelon®

**> SPECIFICATIONS:**

B Tolerance:

.1877 +.0007/- .0000  
 .2502 & .3752 +.0009/- .0000  
 .5002 & .6252 +.0011/- .0000  
 .7503 & 1.0003 +.0013/- .0000

D Tolerance:

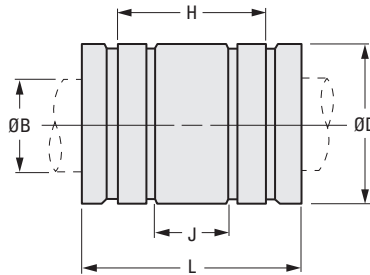
.3750 to 1.2500 +.0000/- .0010  
 1.5625 +.0000/- .0012

L Tolerance:

.562 to 2.250 +.000/- .015

Housing Bore Tolerance:

.3750 to 1.5625 +.0009/- .0000



**APPLICABLE RETAINING RINGS AND O-RINGS**

Bearing Reference	Catalog Numbers	
	Retaining Ring	O-Ring
S99CPC-03F037056	A 9Q27-037	—
S99CPC-04F050075	A 9Q27-050	A 6R11M02010
S99CPC-06F062087	A 9Q27-062	A 6R11M02013
S99CPC-08F087125	A 9Q27-087	A 6R11M03017
S99CPC-10F112150	A 9Q27-112	A 6R11M03024
S99CPC-12F125162	A 9Q27-125	A 6R11M03027
S99CPC-16F156225	A 9Q27-156	A 6R11M03035

**INCH COMPONENT**

Catalog Number	Nom. I.D.	B Bore	D O.D.	L Length	Housing Bore	H Retaining Ring Spacing	J O-Ring Spacing	Max. Load lbf	Effective Surface Area in. <sup>2</sup>
S99CPC-03F037056	3/16	.1877	.3750	.562	.3750	.375	—	110	.110
S99CPC-04F050075	1/4	.2502	.5000	.750	.5000	.437	.125	300	.200
S99CPC-06F062087	3/8	.3752	.6250	.875	.6250	.562	.187	510	.340
S99CPC-08F087125	1/2	.5002	.8750	1.250	.8750	.875	.250	975	.650
S99CPC-10F112150	5/8	.6252	1.1250	1.500	1.1250	1.000	.312	1470	.980
S99CPC-12F125162	3/4	.7503	1.2500	1.625	1.2500	1.062		1905	1.270
S99CPC-16F156225	1	1.0003	1.5625	2.250	1.5625	1.625	.500	3525	2.350