

PLASTIC BALL BEARINGS



LIGHTWEIGHT
ELECTRICALLY INSULATED
NONCORROSIVE
SELF LUBRICATING

PHONE: 516.328.3300 • FAX: 516.326.8827 • WWW.SDP-SI.COM



> MATERIAL:

Rings & Cage - Acetal
Balls - Ground Glass or 316 Stainless Steel

> OPERATING TEMPERATURE:

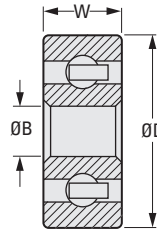
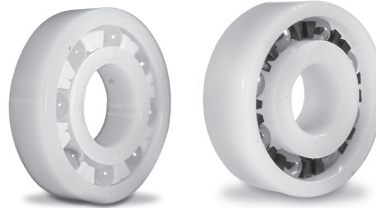
Continuous: -22°F to +212°F
Intermittent: -67°F to +284°F

> SPECIFICATIONS:

B Tolerance:
.250 thru .750 +.003/-0
1.000 +.004/-0

O.D. Tolerance:
.625, .750 & .875 +.0/-0.003
1.125, 1.375 & 1.625 +.0/-0.004
2.000 +.0/-0.005

Other sizes available on special order.
Call for price and delivery.



INCH COMPONENT		B Bore	D O.D.	W Width	Load Rating Radial lbf	
Catalog Number					Dynamic	Static
Glass	Stainless Steel					
—	A 7Z 5-S0602A	.250	.625	.196	26	17
—	A 7Z 5-S0702		.750	.218		
A 7Z 5-G0803	A 7Z 5-S0803	.375	.875	.281	42	33
A 7Z 5-G0803A	A 7Z 5-S0803A			.375		
—	A 7Z 5-S1103	.500	1.125	.250	55	43
—	A 7Z 5-S1105			.281		
A 7Z 5-G1306	—	.625	1.375	.375	69	54
—	A 7Z 5-S1306A			.4375		
—	A 7Z 5-S1306B					
A 7Z 5-G1607	A 7Z 5-S1607	.750	1.625	.3125	78	63
A 7Z 5-G2010	A 7Z 5-S2010	1.000	2.000	.500	92	77

NOTE: Bearings used over 2500 rpm require lubrication. Water is acceptable.

