

## SQUARE HOLE BUSHINGS

PHONE: 516.328.3300 • FAX: 516.326.8827 • WWW.SDP-SI.COM

**> MATERIAL:**

4140 Steel

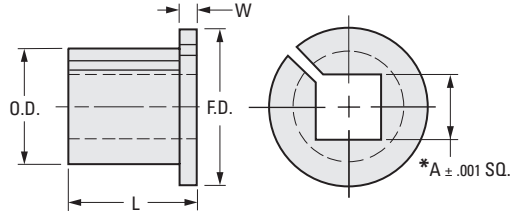
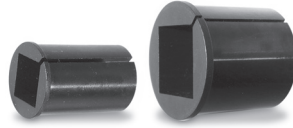
**> FEATURES:**

Fits ANY mating size collet, or 3-jawed chucks.  
Provides good concentricity without time consuming adjustments.  
Costs a fraction of the price of square collets.

**> HARDNESS:**

Rc 40-45

\* Before Slotting



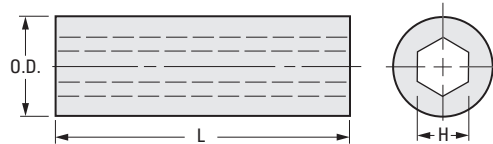
### INCH COMPONENT

Catalog Number	Tool Bit Size	A Square	L Length	O.D.	F.D.	W Flange Width
A 7C18-03	3/16	.1915	3/4	.375	1/2	1/16
A 7C18-04	1/4	.255	1	.468	9/16	1/16
A 7C18-05	5/16	.3175	1	.562	11/16	1/16
A 7C18-06	3/8	.380	1	.656	3/4	1/16
A 7C18-07	7/16	.4425	1-1/4	.750	7/8	1/16
A 7C18-08	1/2	.505	1-1/4	.812	7/8	1/16
A 7C18-10	5/8	.630	1-1/2	1.000	1-1/8	1/16
A 7C18-12	3/4	.755	1-1/2	1.187	1-3/8	1/8
A 7C18-14	7/8	.880	1-3/4	1.375	1-1/2	1/8
A 7C18-16	1	1.008	2	1.562	1-5/8	1/8
A 7C18-18	1-1/8	1.130	2	1.750	1-7/8	1/8
A 7C18-19	1-3/16	1.190	2	1.812	2	1/8
A 7C18-20	1-1/4	1.260	2	2.000	2-1/8	1/8

## HEX HOLE SLEEVES

**> MATERIAL:**

Carbon Steel AISI C1117,  
May be Case-Hardened



### INCH COMPONENT

Catalog Number	H Hex Size ± .001	L Length	O.D. (Stock)
A 7C20-02	.128	3/4	1/4
A 7C20-03	.190	1-1/2	3/8
A 7C20-04	.253	2	1/2
A 7C20-05	.315	2-1/4	9/16
A 7C20-06	.378	2-1/2	5/8
A 7C20-07	.440	2-5/8	3/4
A 7C20-08	.503	2-3/4	13/16
A 7C20-10	.628	3-1/4	1