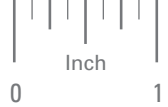


BORE REDUCERS



INCH TO INCH REDUCTION

PHONE: 516.328.3300 • FAX: 516.326.8827 • WWW.SDP-SI.COM

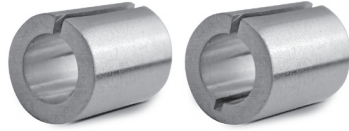


> MATERIAL:

Aluminum

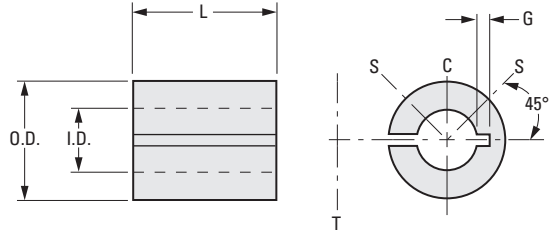
> INSTALLATION RECOMMENDATIONS:

- S = set screw positions in hub
- C = for single set screw fastening
- T = for tangential screw in clamp hub



> SPECIFICATIONS:

Bore reducers with thicker walls may have a slot extending into opposite wall for additional flexibility. O.D. and I.D. tolerances are maintained before slitting.



INCH COMPONENT

Catalog Number	O.D. +.0005 -.0010	I.D. +.001 -.000	G Groove Depth	L
A 7A30-251203	.2500	.1250	.025	3/8
A 7A30-251204	.2500	.1250	.025	1/2
A 7A30-251205	.2500	.1250	.025	5/8
A 7A30-251803	.2500	.1875	—	3/8
A 7A30-251804	.2500	.1875	—	1/2
A 7A30-251805	.2500	.1875	—	5/8
A 7A30-311803	.3125	.1875	.025	3/8
A 7A30-311804	.3125	.1875	.025	1/2
A 7A30-311805	.3125	.1875	.025	5/8
A 7A30-311806	.3125	.1875	.025	3/4
A 7A30-311807	.3125	.1875	.025	7/8
A 7A30-312503	.3125	.2500	—	3/8
A 7A30-312504	.3125	.2500	—	1/2
A 7A30-312505	.3125	.2500	—	5/8
A 7A30-312506	.3125	.2500	—	3/4
A 7A30-312507	.3125	.2500	—	7/8
A 7A30-372504	.3750	.2500	—	1/2
A 7A30-372505	.3750	.2500	—	5/8
A 7A30-372506	.3750	.2500	—	3/4
A 7A30-372507	.3750	.2500	.025	7/8
A 7A30-372508	.3750	.2500	.025	1
A 7A30-373104	.3750	.3125	—	1/2
A 7A30-373105	.3750	.3125	—	5/8
A 7A30-373106	.3750	.3125	—	3/4

Catalog Number	O.D. +.0005 -.0010	I.D. +.001 -.000	G Groove Depth	L
A 7A30-373107	.3750	.3125	—	7/8
A 7A30-373108	.3750	.3125	—	1
A 7A30-503104	.5000	.3125	.035	1/2
A 7A30-503105	.5000	.3125	.035	5/8
A 7A30-503106	.5000	.3125	.035	3/4
A 7A30-503107	.5000	.3125	.035	7/8
A 7A30-503108	.5000	.3125	.035	1
A 7A30-503704	.5000	.3750	—	1/2
A 7A30-503705	.5000	.3750	—	5/8
A 7A30-503706	.5000	.3750	—	3/4
A 7A30-503707	.5000	.3750	—	7/8
A 7A30-503708	.5000	.3750	—	1
A 7A30-503710	.5000	.3750	—	1-1/4
A 7A30-623104	.6250	.3125	.035	1/2
A 7A30-623105	.6250	.3125	.035	5/8
A 7A30-623106	.6250	.3125	.035	3/4
A 7A30-623107	.6250	.3125	.035	7/8
A 7A30-623108	.6250	.3125	.035	1
A 7A30-623110	.6250	.3125	.035	1-1/4
A 7A30-623704	.6250	.3750	—	1/2
A 7A30-623705	.6250	.3750	—	5/8
A 7A30-623706	.6250	.3750	—	3/4
A 7A30-623707	.6250	.3750	—	7/8
A 7A30-623708	.6250	.3750	—	1
A 7A30-623710	.6250	.3750	—	1-1/4