

FASTLOCK SHAFT COLLARS

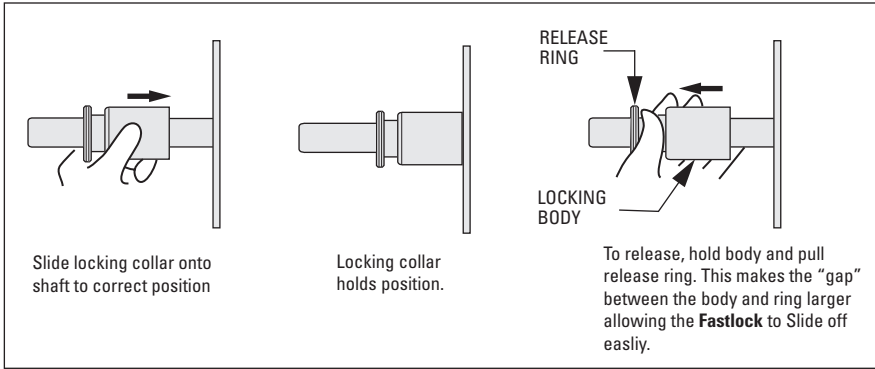
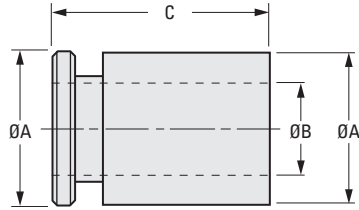


NO TOOLS NEEDED
USABLE FOR NONHARDENED SHAFTS

PHONE: 516.328.3300 • FAX: 516.326.8827 • WWW.SDP-SI.COM

MATERIAL:

- Inner Body** - 303 Stainless Steel
- Outer Sleeve** - 303 Stainless Steel
- Balls** - 440C Stainless Steel
- Spring** - 302 Stainless Steel



INCH COMPONENT

Catalog Number	A Dia.	B Shaft Dia. +001 -015	C Overall Length	Weight lb.
S25FLY-0250	.73	.250	1.00	.07
S25FLY-0313	.73	.3125	1.00	.07
S25FLY-0375	.85	.375	1.78	.18
S25FLY-0500	1.10	.500	1.78	.29
S25FLY-0625	1.10	.625	1.78	.23
S25FLY-0750	1.23	.750	1.78	.28
S25FLY-0875	1.45	.875	1.78	.41
S25FLY-1000	1.45	1.000	1.78	.32
S25FLY-1250	2.23	1.250	1.87	1.12
S25FLY-1500	2.23	1.500	1.87	.87
S25FLY-1625	2.35	1.625	1.87	.91
S25FLY-1750	2.72	1.750	1.87	1.42
S25FLY-2000	2.95	2.000	1.87	1.54