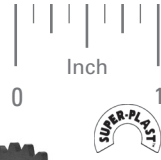


SIZE 14
 MOLDED WITH METAL INSERT
 .17 FACE

PHONE: 516.328.3300 • FAX: 516.326.8827 • WWW.SDP-SI.COM



> **MATERIAL:**

- Ladder Chain** - Galvanized Steel, Brass, High-Tensile Stainless Steel or Stainless Steel
- Sprocket** - Acetal, Black
- Insert** - Brass, Knurled

> **SPECIFICATIONS:**

Sprockets with:

Bore	Set Screw & Spot Drill
.1875	#4-40
.250	#6-32
.3125	#8-32

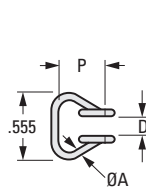


Fig. 1

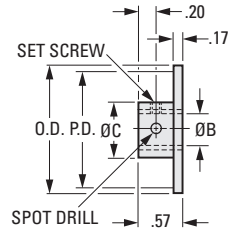


Fig. 2

INCH COMPONENT

Catalog Number	Material	P Pitch	Links Per Foot	A Wire Dia.	D Inside Width	Yield Point lbf
Fig. 1 Ladder Chains - Priced Per Foot						
A 6C 8-14	Steel, Galvanized	.353	34	.080	.205	80
A 6C88-14	High-Tensile Stainless Steel, 400 Series					150
A 6B 8-14	Brass					45
A 6Y 8-14	Stainless Steel, 300 Series					80

Catalog Number	No. of Teeth	P.D.	D Dia.	B Bore +.001 -.000	C Hub Dia.
Fig. 2 Sprockets					
A 6Z 8-141206	12	1.36	1.58	.1875	.62
A 6Z 8-141208			.250		
A 6Z 8-141306	13	1.48	1.69	.1875	
A 6Z 8-141308			.250		
A 6Z 8-141406	14	1.59	1.79	.1875	
A 6Z 8-141408			.250		
A 6Z 8-141508	15	1.70	1.90	.3125	
A 6Z 8-141510			.250		
A 6Z 8-141608	16	1.81	2.00	.250	
A 6Z 8-141610			.3125		
A 6Z 8-141810	18	2.03	2.22	.3125	.75
A 6Z 8-142010	20	2.26	2.44		
A 6Z 8-142210	22	2.48	2.65		
A 6Z 8-142410	24	2.70	2.92		
A 6Z 8-142510	25	2.82	3.02		
A 6Z 8-143010	30	3.38	3.56		
A 6Z 8-143210	32	3.60	3.78		
A 6Z 8-143610	36	4.05	4.25		
A 6Z 8-144010	40	4.50	4.71		
A 6Z 8-144810	48	5.40	5.58		

