

SIZE 18
 MOLDED WITH METAL INSERT
 .100 FACE

PHONE: 516.328.3300 • FAX: 516.326.8827 • WWW.SDP-SI.COM

► **MATERIAL:**

- Ladder Chain** - Galvanized Steel, Brass, High-Tensile Stainless Steel or Stainless Steel
- Sprocket** - Acetal, Black
- Insert** - Brass, Knurled

► **SPECIFICATIONS:**

Sprockets with:

| Bore | Set Screw & Spot Drill |
|-------|------------------------|
| .1875 | #4-40 |
| .250 | #6-32 |
| .3125 | #8-32 |

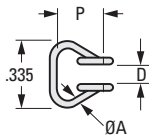
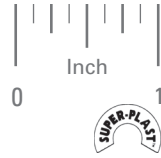
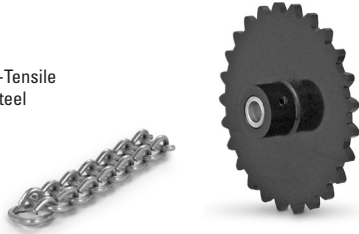


Fig. 1

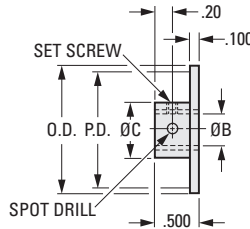


Fig. 2

INCH COMPONENT

| Catalog Number | Material | P Pitch | Links Per Foot | A Wire Dia. | D Inside Width | Yield Point lbf |
|---|--|---------|----------------|-------------|----------------|-----------------|
| Fig. 1 Ladder Chains - Priced Per Foot | | | | | | |
| A 6C 8-18 | Steel, Galvanized | .286 | 42 | .0475 | .130 | 40 |
| A 6C88-18 | High-Tensile Stainless Steel, 400 Series | | | | | 75 |
| A 6B 8-18 | Brass | | | | | 25 |
| A 6Y 8-18 | Stainless Steel, 300 Series | | | | | 40 |

| Catalog Number | No. of Teeth | P.D. | O.D. | B Bore +.001 - .000 | C Hub Dia. |
|-------------------------|--------------|-------|------|---------------------|------------|
| Fig. 2 Sprockets | | | | | |
| A 6Z 8-181306 | 13 | 1.194 | 1.38 | .1875 | .625 |
| A 6Z 8-181308 | | | | .250 | |
| A 6Z 8-181406 | 14 | 1.284 | 1.47 | .1875 | |
| A 6Z 8-181408 | | | | .250 | |
| A 6Z 8-181506 | 15 | 1.374 | 1.56 | .1875 | |
| A 6Z 8-181508 | | | | .250 | |
| A 6Z 8-181606 | 16 | 1.465 | 1.66 | .1875 | |
| A 6Z 8-181608 | | | | .250 | |
| A 6Z 8-181806 | 18 | 1.645 | 1.84 | .1875 | |
| A 6Z 8-181808 | | | | .250 | |
| A 6Z 8-182006 | 20 | 1.826 | 2.02 | .1875 | |
| A 6Z 8-182008 | | | | .250 | |
| A 6Z 8-182206 | 22 | 2.007 | 2.20 | .1875 | |
| A 6Z 8-182208 | | | | .250 | |
| A 6Z 8-182406 | 24 | 2.189 | 2.38 | .1875 | |

| Catalog Number | No. of Teeth | P.D. | O.D. | B Bore +.001 - .000 | C Hub Dia. |
|-------------------------|--------------|-------|------|---------------------|------------|
| Fig. 2 Sprockets | | | | | |
| A 6Z 8-182408 | 24 | 2.189 | 2.38 | .250 | .625 |
| A 6Z 8-182410 | | | | .3125 | .750 |
| A 6Z 8-182506 | 25 | 2.280 | 2.47 | .1875 | .625 |
| A 6Z 8-182508 | | | | .250 | .750 |
| A 6Z 8-182510 | 30 | 2.733 | 2.92 | .3125 | .750 |
| A 6Z 8-183006 | | | | .250 | .625 |
| A 6Z 8-183010 | 32 | 2.915 | 3.11 | .3125 | .750 |
| A 6Z 8-183208 | | | | .250 | .625 |
| A 6Z 8-183210 | 36 | 3.278 | 3.47 | .3125 | .750 |
| A 6Z 8-183608 | | | | .250 | .625 |
| A 6Z 8-183610 | 40 | 3.641 | 3.83 | .3125 | .750 |
| A 6Z 8-184010 | | | | .250 | .625 |
| A 6Z 8-184810 | 48 | 4.369 | 4.56 | .3125 | .750 |
| A 6Z 8-185410 | 54 | 4.914 | 5.10 | .3125 | .750 |