

SIZE 19  
 MOLDED WITH METAL INSERT  
 .10 FACE

PHONE: 516.328.3300 • FAX: 516.326.8827 • WWW.SDP-SI.COM

> **MATERIAL:**

**Ladder Chain** - Galvanized Steel, Brass, High-Tensile  
 Stainless Steel or Stainless Steel

**Sprocket** - Acetal, Black

**Insert** - Brass, Knurled

> **SPECIFICATIONS:**

Sprockets with:

Bore	Set Screw & Spot Drill
.1875	#4-40
.250	#6-32
.3125	#8-32

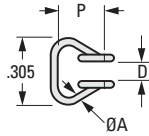
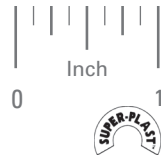


Fig. 1

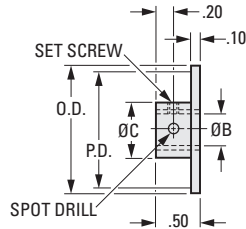


Fig. 2

**INCH COMPONENT**

Catalog Number	Material	P Pitch	Links Per Foot	A Wire Dia.	D Inside Width	Yield Point lbf
<b>Fig. 1 Ladder Chains - Priced Per Foot</b>						
A 6C 8-19	Steel, Galvanized	.185	65	.041	.120	30
A 6C88-19	High-Tensile Stainless Steel, 400 Series					55
A 6B 8-19	Brass					18
A 6Y 8-19	Stainless Steel, 300 Series					30

Catalog Number	No. of Teeth	P.D.	O.D.	B Bore +.001 - .000	C Hub Dia.
<b>Fig. 2 Sprockets</b>					
A 6Z 8-192006	20	1.18	1.35	.1875	.62
A 6Z 8-192008				.250	
A 6Z 8-192206	22	1.30	1.47	.1875	.75
A 6Z 8-192208				.250	
A 6Z 8-192406	24	1.42	1.59	.1875	.62
A 6Z 8-192408				.250	
A 6Z 8-192410	25	1.47	1.64	.3125	.75
A 6Z 8-192506				.1875	
A 6Z 8-192508	25	1.47	1.64	.250	.62
A 6Z 8-192510				.3125	
A 6Z 8-193006	30	1.77	1.94	.1875	.62
A 6Z 8-193008				.250	
A 6Z 8-193010	32	1.88	2.05	.3125	.75
A 6Z 8-193206				.1875	

Catalog Number	No. of Teeth	P.D.	O.D.	B Bore +.001 - .000	C Hub Dia.
<b>Fig. 2 Sprockets</b>					
A 6Z 8-193208	32	1.88	2.05	.250	.62
A 6Z 8-193210				.3125	.75
A 6Z 8-193606	36	2.12	2.29	.1875	.62
A 6Z 8-193608				.250	.75
A 6Z 8-194006	40	2.35	2.52	.1875	.62
A 6Z 8-194008				.250	.75
A 6Z 8-194010	48	2.82	2.99	.3125	.75
A 6Z 8-194806				.1875	.62
A 6Z 8-194808	48	2.82	2.99	.250	.62
A 6Z 8-194810				.3125	.75
A 6Z 8-195406	54	3.18	3.35	.1875	.62
A 6Z 8-195408				.250	.75
A 6Z 8-195410	60	3.53	3.70	.3125	.75
A 6Z 8-196010				.250	.62
A 6Z 8-197210	72	4.23	4.40		

I  
R  
T  
1  
2  
3  
4  
5  
6  
7  
8  
9  
10  
11  
12  
13  
14  
15  
16