

SIZE 21
MOLDED
.065 FACE

PHONE: 516.328.3300 • FAX: 516.326.8827 • WWW.SDP-SI.COM

> **MATERIAL:**

Ladder Chain - Galvanized Steel, High-Tensile Steel or Stainless Steel
Sprocket - Acetal, Black

> **SPECIFICATION:**

Use straight knurl on shafting for maximum torques.

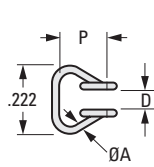


Fig. 1

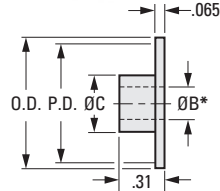


Fig. 2

INCH COMPONENT

Catalog Number	Material	P Pitch	Links Per Foot	A Wire Dia.	D Inside Width	Yield Point lbf
Fig. 1 Ladder Chains - Priced Per Foot						
A 6C 8-21	Steel, Galvanized	.167	72	.032	.080	18
A 6C88-21	High-Tensile Steel, Zinc Plated (non-RoHS)					35
A 6Y 8-21	Stainless Steel, 300 Series					18

Catalog Number	No. of Teeth	P.D.	O.D.	B* Bore Nom.	C Hub Dia.
Fig. 2 Sprockets					
A 6M 8-210604	6	.334	.47	1/8	.246
A 6M 8-210804	8	.436	.56		
A 6M 8-211006	10	.540	.66	3/16	.310
A 6M 8-211008				1/4	.370
A 6M 8-211204	12	.646	.78	1/8	.246
A 6M 8-211206				3/16	.310
A 6M 8-211308	13	.697	.83	1/4	.370
A 6M 8-211408	14	.749	.88	1/4	.370
A 6M 8-211608	16	.855	.99	1/4	.370
A 6M 8-211612				3/8	.490
A 6M 8-212012	20	1.066	1.20	3/8	.490
A 6M 8-212508	25	1.330	1.46	1/4	.370
A 6M 8-212512				3/8	.490
A 6M 8-213012	30	1.595	1.73	3/8	.490
A 6M 8-213208	32	1.701	1.84	1/4	.370
A 6M 8-213212				3/8	.490
A 6M 8-214012	40	2.125	2.26	3/8	.490

* Bore is sized for press fit on standard shafting.

- I
- R
- T
- 1
- 2**
- 3
- 4
- 5
- 6
- 7
- 8
- 9
- 10
- 11
- 12
- 13
- 14
- 15
- 16