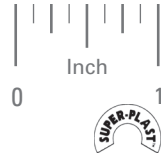


SIZE 21  
 MOLDED WITH METAL INSERT  
 .065 FACE

PHONE: 516.328.3300 • FAX: 516.326.8827 • WWW.SDP-SI.COM



**> MATERIAL:**

**Ladder Chain** - Galvanized Steel, High-Tensile Steel or Stainless Steel  
**Sprocket** - Acetal, Black  
**Insert** - Brass, Knurled

**> SPECIFICATIONS:**

Sprockets with:

Bore	Set Screw & Spot Drill
.125	#2-56
.1875	#4-40
.250	#6-32

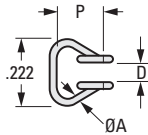


Fig. 1

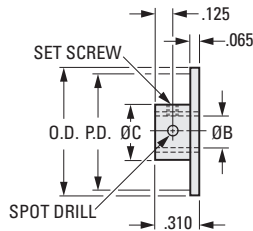


Fig. 2

**INCH COMPONENT**

Catalog Number	Material	P Pitch	Links Per Foot	A Wire Dia.	D Inside Width	Yield Point lbf
<b>Fig. 1 Ladder Chains - Priced Per Foot</b>						
A 6C 8-21	Steel, Galvanized	.167	72	.032	.080	18
A 6C88-21	High-Tensile Steel, Zinc Plated (non-RoHS)					35
A 6Y 8-21	Stainless Steel, 300 Series					18

Catalog Number	No. of Teeth	P.D.	O.D.	B Bore +.001 -.000	C Hub Dia.
<b>Fig. 2 Sprockets</b>					
A 6Z 8-211004	10	.540	.66	.125	.370
A 6Z 8-211006				.1875	
A 6Z 8-211204	12	.646	.78	.125	
A 6Z 8-211206				.1875	
A 6Z 8-211304	13	.697	.83	.125	
A 6Z 8-211306				.1875	
A 6Z 8-211404	14	.749	.88	.125	
A 6Z 8-211406				.1875	
A 6Z 8-211504	15	.802	.94	.125	
A 6Z 8-211506				.1875	
A 6Z 8-211604	16	.855	.99	.125	
A 6Z 8-211606				.1875	
A 6Z 8-211608	18	.960	1.09	.250	
A 6Z 8-211804				.125	
A 6Z 8-211806	18	.960	1.09	.1875	
A 6Z 8-211808				.250	
A 6Z 8-212004	20	1.066	1.20	.125	
A 6Z 8-212006				.1875	
A 6Z 8-212008				.250	

Catalog Number	No. of Teeth	P.D.	O.D.	B Bore +.001 -.000	C Hub Dia.
<b>Fig. 2 Sprockets</b>					
A 6Z 8-212106	21	1.119	1.25	.1875	.490
A 6Z 8-212108				.250	
A 6Z 8-212206	22	1.172	1.30	.1875	
A 6Z 8-212208				.250	
A 6Z 8-212406	24	1.277	1.41	.1875	
A 6Z 8-212408				.250	
A 6Z 8-212506	25	1.330	1.46	.1875	
A 6Z 8-212508				.250	
A 6Z 8-213006	30	1.595	1.73	.1875	
A 6Z 8-213008				.250	
A 6Z 8-213206	32	1.701	1.84	.1875	
A 6Z 8-213208				.250	
A 6Z 8-213606	36	1.913	2.05	.1875	
A 6Z 8-213608				.250	
A 6Z 8-214006	40	2.125	2.26	.1875	
A 6Z 8-214008				.250	
A 6Z 8-214806	48	2.549	2.68	.1875	
A 6Z 8-214808				.250	