

FOR 9 mm BELTS (.354 INCH)
FOR USE WITH GT®2, GT®3 and FHT®-2 BELTS
 DOUBLE OR NO FLANGE
TRUE METRIC® PROFILE

PHONE: 516.328.3300 • FAX: 516.326.8827 • WWW.SDP-SI.COM

> MATERIAL:

Aluminum Alloy

> FINISH:

Clear Anodized

> SPECIFICATIONS:

O.D. Tolerance:
 12 to 40 grooves is +.002/-0.000
 42 to 80 grooves is +.003/-0.000
 90 to 120 grooves is +.004/-0.000

Pulleys with 12 to 16 grooves have 1 set screw; others have 2 set screws at 90°.

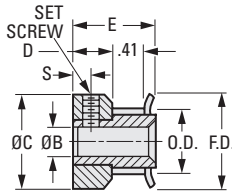
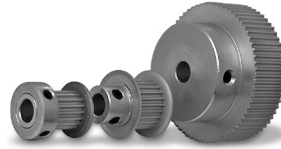


Fig. 1

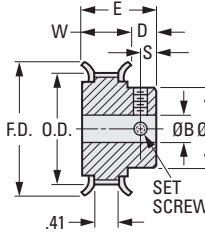


Fig. 2

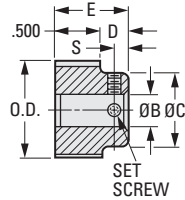


Fig. 3

INCH COMPONENT

Catalog Number	Fig. No.	No. of Grooves	P.D.	O.D.	F.D. ± 1/64	B Bore +.001 -0.000	W Body	E Lgth. ± 1/64	C Hub Dia. ± 1/64	D Hub Proj.	S	Set Screw
A 6A51-012DF0904	1	12	.301	.281	.480	.125	—	11/16	.480	15/64	7/64	#4-40
A 6A51-013DF0904	1	13	.326	.306	.505	.125	—	11/16	.505	15/64	7/64	#4-40
A 6A51-014DF0904	1	14	.351	.331	.530	.125	—	11/16	.530	15/64	7/64	#4-40
A 6A51-015DF0906	1	15	.376	.356	.555	.1875	—	11/16	.555	15/64	7/64	#6-40
A 6A51-016DF0906	1	16	.401	.381	.580	.1875	—	11/16	.580	15/64	7/64	#6-40
A 6A51-017DF0906	2	17	.426	.406	.635	.1875	.514	3/4	.312	15/64	7/64	#4-40
A 6A51-017DF0908	1	17	.426	.406	.635	.250	—	11/16	.635	15/64	7/64	#6-40
A 6A51-018DF0906	2	18	.451	.431	.635	.1875	.514	3/4	.312	15/64	7/64	#4-40
A 6A51-018DF0908	1	18	.451	.431	.635	.250	—	11/16	.635	15/64	7/64	#6-40
A 6A51-019DF0906	2	19	.476	.456	.635	.1875	.514	3/4	.338	15/64	7/64	#4-40
A 6A51-019DF0908	1	19	.476	.456	.635	.250	—	11/16	.635	15/64	7/64	#6-40
A 6A51-020DF0906	2	20	.501	.481	.685	.1875	.514	3/4	.364	15/64	7/64	#4-40
A 6A51-020DF0908	1	20	.501	.481	.685	.250	—	11/16	.685	15/64	7/64	#6-40
A 6A51-021DF0906	2	21	.526	.506	.710	.1875	.514	3/4	.390	15/64	7/64	#4-40
A 6A51-021DF0908	1	21	.526	.506	.710	.250	—	11/16	.710	15/64	7/64	#6-40
A 6A51-022DF0906	2	22	.551	.531	.740	.1875	.514	3/4	.390	15/64	7/64	#4-40
A 6A51-022DF0908	1	22	.551	.531	.740	.250	—	11/16	.740	15/64	7/64	#6-40
A 6A51-024DF0908	2	24	.602	.582	.790	.250	.514	13/16	.442	19/64	5/32	#6-40
A 6A51-025DF0908	2	25	.627	.607	.815	.250	.514	13/16	.468	19/64	5/32	#6-40
A 6A51-026DF0908	2	26	.652	.632	.840	.250	.514	13/16	.490	19/64	5/32	#6-40
A 6A51-028DF0908	2	28	.702	.682	.895	.250	.514	13/16	.494	19/64	5/32	#6-40
A 6A51-030DF0908	2	30	.752	.732	.945	.250	.514	13/16	.546	19/64	5/32	#8-32
A 6A51-032DF0908	2	32	.802	.782	1.000	.250	.514	13/16	.598	19/64	5/32	#8-32
A 6A51-036DF0908	2	36	.902	.882	1.105	.250	.514	13/16	.676	19/64	5/32	#8-32
A 6A51-040DF0908	2	40	1.003	.983	1.210	.250	.530	27/32	.754	5/16	5/32	#8-32
A 6A51-042DF0908	2	42	1.053	1.033	1.260	.250	.530	27/32	.806	5/16	5/32	#8-32
A 6A51-044DF0908	2	44	1.103	1.083	1.315	.250	.530	27/32	.858	5/16	5/32	#8-32
A 6A51-045DF0908	2	45	1.128	1.108	1.340	.250	.530	27/32	.900	5/16	5/32	#8-32
A 6A51-048DF0908	2	48	1.203	1.183	1.420	.250	.530	27/32	.936	5/16	5/32	#8-32
A 6A51-050DF0908	2	50	1.253	1.233	1.470	.250	.530	27/32	.936	5/16	5/32	#8-32
A 6A51-058DF0908	2	56	1.404	1.384	1.575	.250	.530	27/32	1.030	5/16	5/32	#8-32
A 6A51-060DF0908	2	60	1.504	1.484	1.730	.250	.530	27/32	1.222	5/16	5/32	#8-32
A 6A51-060NF0908	3	60	1.504	1.484	—	.250	—	7/8	1.148	3/8	3/16	#8-32
A 6A51-062NF0908	3	62	1.554	1.534	—	.250	—	7/8	1.148	3/8	3/16	#8-32
A 6A51-068NF0908	3	68	1.704	1.684	—	.250	—	7/8	1.195	3/8	3/16	#8-32
A 6A51-072NF0908	3	72	1.805	1.785	—	.250	—	7/8	1.195	3/8	3/16	#8-32
A 6A51-074NF0908	3	74	1.855	1.835	—	.250	—	7/8	1.215	3/8	3/16	#8-32
A 6A51-080NF0910	3	80	2.005	1.985	—	.3125	—	7/8	1.500	3/8	3/16	#8-32
A 6A51-090NF0910	3	90	2.256	2.236	—	.3125	—	7/8	1.500	3/8	3/16	#8-32
A 6A51-100NF0910	3	100	2.506	2.486	—	.3125	—	7/8	1.500	3/8	3/16	#8-32
A 6A51-120NF0912	3	120	3.008	2.988	—	.375	—	7/8	1.500	3/8	5/32	#10-32

