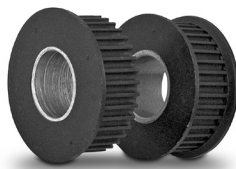


FOR 9 mm BELTS (.354 INCH)

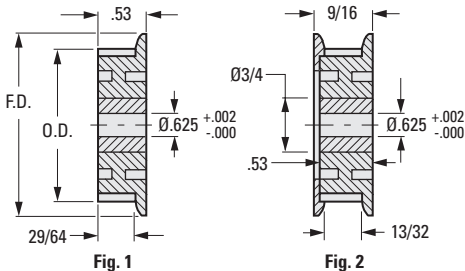
PHONE: 516.328.3300 • FAX: 516.326.8827 • WWW.SDP-SI.COM

PATENTED
MOLDED WITH METAL INSERT
SINGLE OR DOUBLE FLANGE



➤ MATERIAL:

Pulley - Black Nylon, Fiberglass Reinforced
Insert - Steel, Overmolded



INCH COMPONENT

Catalog Number		No. of Grooves	P.D.	O.D.	F.D.
Single Flange Fig. 1	Double Flange Fig. 2				
—	A 6T23-H30DF0920	30	1.128	1.098	1.25
A 6T23-H32SF0920	A 6T23-H32DF0920	32	1.203	1.173	1.32
A 6T23-H36SF0920	A 6T23-H36DF0920	36	1.353	1.323	1.47
A 6T23-H40SF0920	A 6T23-H40DF0920	40	1.504	1.474	1.62
A 6T23-H42SF0920	A 6T23-H42DF0920	42	1.579	1.549	1.70
A 6T23-H48SF0920	A 6T23-H48DF0920	48	1.805	1.775	1.92
A 6T23-H50SF0920	—	50	1.880	1.850	2.00
A 6T23-H60SF0920	—	60	2.256	2.226	2.37
A 6T23-H72SF0920	—	72	2.707	2.677	2.83

The Shaftloc® shown below may be used to secure these pulleys on the shaft.

APPLICABLE SHAFTLOC® SLEEVE

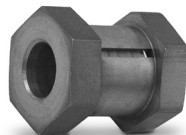
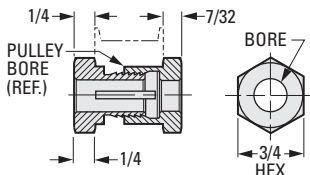
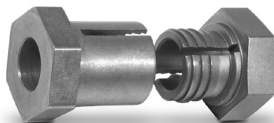
(For Shaftloc® Introduction and use, see preceding page)

➤ MATERIAL:

416 Stainless Steel

➤ SPECIFICATION:

A 3/4 O.D. x 5/8 I.D. x .05 thick washer,
Catalog Number **A 7X 8-C20050** is supplied.



INCH COMPONENT

Catalog Number	Pulley Bore (Ref.)	Max. Torque Capacity* lbf in.
A 7Z37-030553	.625	250

* Based on mating components being degreased before assembly with Shaftloc® coupling.