

XL TIMING BELT PULLEYS • 1/5" PITCH

SDPSI

FOR 3/8" BELTS
 MOLDED WITH SET SCREW
 SINGLE OR NO FLANGE

PHONE: 516.328.3300 • FAX: 516.326.8827 • WWW.SDP-SI.COM

➤ **MATERIAL:**
 Polycarbonate

➤ **SPECIFICATION:**
 Pulleys have 2 #10-32
 set screws at 90°.

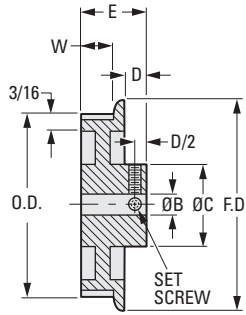
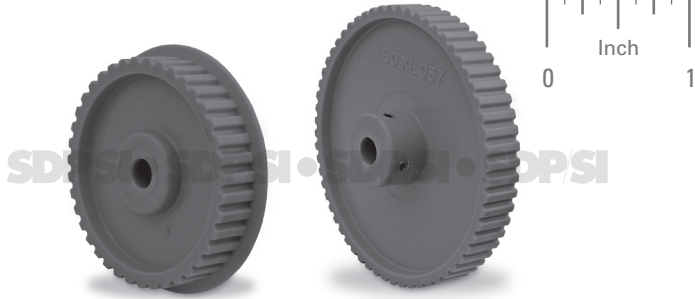


Fig. 1
Single Flange

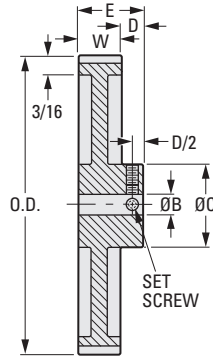


Fig. 2
No Flange

INCH COMPONENT

Catalog Number	No. of Grooves	P.D.	O.D.	F.D.	B Bore	E Length	C Hub Dia.	D Hub Proj.	W
Fig. 1 Single Flange									
A 6K 3-32SF03710	32	2.037	2.017	2.27	.3125	13/16	7/8	5/16	7/16
A 6K 3-34SF03710	34	2.165	2.145	2.40					
A 6K 3-35SF03710	35	2.228	2.208	2.46					
A 6K 3-36SF03710	36	2.292	2.272	2.53					
A 6K 3-37SF03710	37	2.355	2.335	2.59					
A 6K 3-39SF03710	39	2.483	2.463	2.71					
A 6K 3-40SF03710	40	2.546	2.526	2.78					
A 6K 3-42SF03710	42	2.674	2.654	2.92					
A 6K 3-44SF03710	44	2.801	2.781	3.04					
A 6K 3-48SF03710	48	3.056	3.036	3.29					
A 6K 3-58SF03712	58	3.692	3.672	3.92	.375	31/32	1	3/8	1/2
A 6K 3-78SF03712	78	4.966	4.946	5.19					
Fig. 2 No Flange									
A 6K 3-60NF03712	60	3.820	3.800	—	.375	7/8	1	3/8	1/2
A 6K 3-72NF03712	72	4.584	4.564	—					

- I
- R
- T
- 1
- 2**
- 3
- 4
- 5
- 6
- 7
- 8
- 9
- 10
- 11
- 12
- 13
- 14
- 15
- 16