

**FOR 5/16" BELTS**  
**DOUBLE FLANGE**

PHONE: 516.328.3300 • FAX: 516.326.8827 • WWW.SDP-SI.COM

**› MATERIAL:**

Aluminum Alloy

**› FINISH:**

Clear Anodized

**› SPECIFICATION:**

Pulleys with 10 to 16 grooves have 1 set screw; others have 2 at 90°.

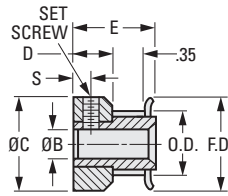
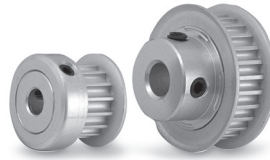


Fig. 1

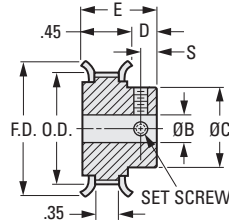


Fig. 2

**INCH COMPONENT**

Catalog Number	No. of Grooves	P.D.	O.D. +.000 - .003	F.D. ± 1/64	B Bore +.001 -.000	E Length ± 1/64	C Hub Dia. ± 1/64	D Hub Proj.	S	Set Screw
<b>Fig. 1</b>										
A 6A 6-10DF03103	10	.260	.246	.425	.094	5/8	.425	15/64	7/64	#2-56
A 6A 6-10DF03104	10	.260	.246	.425	.125	5/8	.425	15/64	7/64	#4-40
A 6A 6-11DF03103	11	.286	.272	.450	.094	5/8	.450	15/64	7/64	#2-56
A 6A 6-11DF03104	11	.286	.272	.450	.125	5/8	.450	15/64	7/64	#4-40
A 6A 6-12DF03103	12	.312	.298	.480	.094	5/8	.480	15/64	7/64	#2-56
A 6A 6-12DF03104	12	.312	.298	.480	.125	5/8	.480	15/64	7/64	#4-40
A 6A 6-13DF03104	13	.338	.324	.505	.125	5/8	.505	15/64	7/64	#4-40
A 6A 6-14DF03104	14	.364	.350	.530	.125	5/8	.530	15/64	7/64	#4-40
A 6A 6-15DF03104	15	.390	.376	.555	.125	5/8	.555	15/64	7/64	#4-40
A 6A 6-15DF03106	15	.390	.376	.555	.1875	5/8	.555	15/64	7/64	#4-40
A 6A 6-16DF03104	16	.416	.402	.580	.125	5/8	.580	15/64	7/64	#4-40
A 6A 6-16DF03106	16	.416	.402	.580	.1875	5/8	.580	15/64	7/64	#4-40
A 6A 6-18DF03108	18	.468	.454	.635	.250	5/8	.635	15/64	7/64	#8-32
A 6A 6-20DF03108	20	.520	.506	.685	.250	5/8	.685	15/64	7/64	#8-32
A 6A 6-21DF03108	21	.546	.532	.710	.250	5/8	.710	15/64	7/64	#8-32
A 6A 6-22DF03108	22	.572	.558	.740	.250	5/8	.740	15/64	7/64	#8-32
<b>Fig. 2</b>										
A 6A 6-18DF03104	18	.468	.454	.635	.125	11/16	.312	15/64	7/64	#4-40
A 6A 6-18DF03106	18	.468	.454	.635	.1875	11/16	.312	15/64	7/64	#6-40
A 6A 6-20DF03104	20	.520	.506	.685	.125	11/16	.364	15/64	7/64	#4-40
A 6A 6-20DF03106	20	.520	.506	.685	.1875	11/16	.364	15/64	7/64	#6-40
A 6A 6-21DF03104	21	.546	.532	.710	.125	11/16	.390	15/64	7/64	#4-40
A 6A 6-21DF03106	21	.546	.532	.710	.1875	11/16	.390	15/64	7/64	#6-40
A 6A 6-22DF03104	22	.572	.558	.740	.125	11/16	.390	15/64	7/64	#4-40
A 6A 6-22DF03106	22	.572	.558	.740	.1875	11/16	.390	15/64	7/64	#6-40
A 6A 6-24DF03106	24	.624	.610	.790	.1875	3/4	.442	19/64	5/32	#6-40
A 6A 6-24DF03108	24	.624	.610	.790	.250	3/4	.442	19/64	5/32	#6-40
A 6A 6-25DF03106	25	.650	.636	.815	.1875	3/4	.468	19/64	5/32	#6-40
A 6A 6-25DF03108	25	.650	.636	.815	.250	3/4	.468	19/64	5/32	#6-40
A 6A 6-26DF03106	26	.676	.662	.840	.1875	3/4	.494	19/64	5/32	#6-40
A 6A 6-26DF03108	26	.676	.662	.840	.250	3/4	.494	19/64	5/32	#6-40
A 6A 6-28DF03106	28	.728	.714	.895	.1875	3/4	.494	19/64	5/32	#6-40
A 6A 6-28DF03108	28	.728	.714	.895	.250	3/4	.494	19/64	5/32	#6-40

Continued on the next page

**FOR 5/16" BELTS**  
DOUBLE FLANGE

PHONE: 516.328.3300 • FAX: 516.326.8827 • WWW.SDP-SI.COM

**> MATERIAL:**

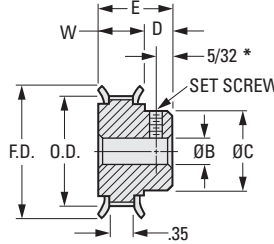
Aluminum Alloy

**> FINISH:**

Clear Anodized

**> SPECIFICATION:**

All pulleys have 2 set screws at 90°.



\* 7/64 for pulleys with 35 grooves

**INCH COMPONENT**

Catalog Number	No. of Grooves	P.D.	O.D. +.000 -.003	F.D. ± 1/64	B Bore +.001 -.000	W	E Length ± 1/64	C Hub Dia. ± 1/64	D Hub Proj.	Set Screw
A 6A 6-30DF03106	30	.780	.766	.945	.1875	.449	3/4	.546	19/64	#6-40
A 6A 6-30DF03108	30	.780	.766	.945	.250	.449	3/4	.546	19/64	#8-32
A 6A 6-32DF03106	32	.832	.818	1.000	.1875	.449	3/4	.598	19/64	#6-40
A 6A 6-32DF03108	32	.832	.818	1.000	.250	.449	3/4	.598	19/64	#8-32
A 6A 6-33DF03106	33	.858	.844	1.025	.1875	.449	3/4	.624	19/64	#6-40
A 6A 6-33DF03108	33	.858	.844	1.025	.250	.449	3/4	.624	19/64	#8-32
A 6A 6-34DF03106	34	.884	.870	1.050	.1875	.449	3/4	.624	19/64	#6-40
A 6A 6-34DF03108	34	.884	.870	1.050	.250	.449	3/4	.624	19/64	#8-32
A 6A 6-35DF03106	35	.910	.896	1.080	.1875	.449	3/4	.650	19/64	#6-40
A 6A 6-35DF03108	35	.910	.896	1.080	.250	.449	3/4	.650	19/64	#8-32
A 6A 6-36DF03106	36	.936	.922	1.105	.1875	.449	3/4	.676	19/64	#6-40
A 6A 6-36DF03108	36	.936	.922	1.105	.250	.449	3/4	.676	19/64	#8-32
A 6A 6-38DF03108	38	.988	.974	1.155	.250	.449	3/4	.728	19/64	#8-32
A 6A 6-38DF03110	38	.988	.974	1.155	.3125	.449	3/4	.728	19/64	#8-32
A 6A 6-40DF03108	40	1.040	1.026	1.210	.250	.465	25/32	.754	5/16	#8-32
A 6A 6-40DF03110	40	1.040	1.026	1.210	.3125	.465	25/32	.754	5/16	#8-32
A 6A 6-42DF03108	42	1.092	1.078	1.260	.250	.465	25/32	.806	5/16	#8-32
A 6A 6-42DF03110	42	1.092	1.078	1.260	.3125	.465	25/32	.806	5/16	#8-32
A 6A 6-44DF03108	44	1.144	1.130	1.315	.250	.465	25/32	.858	5/16	#8-32
A 6A 6-44DF03110	44	1.144	1.130	1.315	.3125	.465	25/32	.858	5/16	#8-32
A 6A 6-45DF03108	45	1.170	1.156	1.340	.250	.465	25/32	.884	5/16	#8-32
A 6A 6-45DF03110	45	1.170	1.156	1.340	.3125	.465	25/32	.884	5/16	#8-32
A 6A 6-48DF03108	48	1.248	1.234	1.420	.250	.465	25/32	.933	5/16	#8-32
A 6A 6-48DF03110	48	1.248	1.234	1.420	.3125	.465	25/32	.933	5/16	#8-32
A 6A 6-50DF03108	50	1.300	1.286	1.470	.250	.465	25/32	.988	5/16	#8-32
A 6A 6-50DF03110	50	1.300	1.286	1.470	.3125	.465	25/32	.988	5/16	#8-32
A 6A 6-54DF03108	54	1.404	1.390	1.575	.250	.465	25/32	1.066	5/16	#8-32
A 6A 6-54DF03110	54	1.404	1.390	1.575	.3125	.465	25/32	1.066	5/16	#8-32
A 6A 6-60DF03108	60	1.560	1.546	1.730	.250	.465	25/32	1.222	5/16	#8-32
A 6A 6-60DF03110	60	1.560	1.546	1.730	.3125	.465	25/32	1.222	5/16	#8-32

Continued from the previous page