

**FOR 3/16" BELTS
DOUBLE FLANGE**

PHONE: 516.328.3300 • FAX: 516.326.8827 • WWW.SDP-SI.COM

► MATERIAL:

Aluminum Alloy

► FINISH:

Clear Anodized

► SPECIFICATION:

Pulleys with 10 to 16 grooves have 1 set screw; others have 2 at 90°.

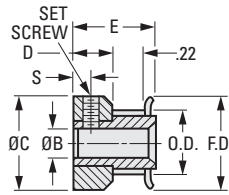


Fig. 1

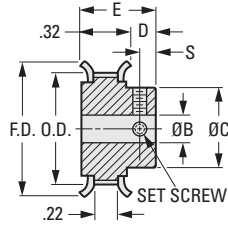


Fig. 2

INCH COMPONENT

Catalog Number	No. of Grooves	P.D.	O.D. +.000 - .003	F.D. ± 1/64	B Bore +.001 - .000	E Length ± 1/64	C Hub Dia. ± 1/64	D Hub Proj.	S	Set Screw
Fig. 1										
A 6A 6-10DF01803	10	.260	.246	.425	.094	1/2	.425	15/64	7/64	#2-56
A 6A 6-10DF01804	10	.260	.246	.425	.125	1/2	.425	15/64	7/64	#4-40
A 6A 6-11DF01803	11	.286	.272	.450	.094	1/2	.450	15/64	7/64	#2-56
A 6A 6-11DF01804	11	.286	.272	.450	.125	1/2	.450	15/64	7/64	#4-40
A 6A 6-12DF01803	12	.312	.298	.480	.094	1/2	.480	15/64	7/64	#2-56
A 6A 6-12DF01804	12	.312	.298	.480	.125	1/2	.480	15/64	7/64	#4-40
A 6A 6-13DF01804	13	.338	.324	.505	.125	1/2	.505	15/64	7/64	#4-40
A 6A 6-14DF01804	14	.364	.350	.530	.125	1/2	.530	15/64	7/64	#4-40
A 6A 6-15DF01804	15	.390	.376	.555	.125	1/2	.555	15/64	7/64	#4-40
A 6A 6-15DF01806	15	.390	.376	.555	.1875	1/2	.555	15/64	7/64	#4-40
A 6A 6-16DF01804	16	.416	.402	.580	.125	1/2	.580	15/64	7/64	#4-40
A 6A 6-16DF01806	16	.416	.402	.580	.1875	1/2	.580	15/64	7/64	#4-40
A 6A 6-18DF01808	18	.468	.454	.635	.250	1/2	.635	15/64	7/64	#8-32
A 6A 6-20DF01808	20	.520	.506	.685	.250	1/2	.685	15/64	7/64	#8-32
A 6A 6-21DF01808	21	.546	.532	.710	.250	1/2	.710	15/64	7/64	#8-32
A 6A 6-22DF01808	22	.572	.558	.740	.250	1/2	.740	15/64	7/64	#8-32
Fig. 2										
A 6A 6-18DF01804	18	.468	.454	.635	.125	9/16	.312	15/64	7/64	#4-40
A 6A 6-18DF01806	18	.468	.454	.635	.1875	9/16	.312	15/64	7/64	#6-40
A 6A 6-20DF01804	20	.520	.506	.685	.125	9/16	.364	15/64	7/64	#4-40
A 6A 6-20DF01806	20	.520	.506	.685	.1875	9/16	.364	15/64	7/64	#6-40
A 6A 6-21DF01804	21	.546	.532	.710	.125	9/16	.390	15/64	7/64	#4-40
A 6A 6-21DF01806	21	.546	.532	.710	.1875	9/16	.390	15/64	7/64	#6-40
A 6A 6-22DF01804	22	.572	.558	.740	.125	9/16	.390	15/64	7/64	#4-40
A 6A 6-22DF01806	22	.572	.558	.740	.1875	9/16	.390	15/64	7/64	#6-40
A 6A 6-24DF01806	24	.624	.610	.790	.1875	5/8	.442	19/64	5/32	#6-40
A 6A 6-24DF01808	24	.624	.610	.790	.250	5/8	.442	19/64	5/32	#6-40
A 6A 6-25DF01806	25	.650	.636	.815	.1875	5/8	.468	19/64	5/32	#6-40
A 6A 6-25DF01808	25	.650	.636	.815	.250	5/8	.468	19/64	5/32	#6-40
A 6A 6-26DF01806	26	.676	.662	.840	.1875	5/8	.494	19/64	5/32	#6-40
A 6A 6-26DF01808	26	.676	.662	.840	.250	5/8	.494	19/64	5/32	#6-40
A 6A 6-28DF01806	28	.728	.714	.895	.1875	5/8	.494	19/64	5/32	#6-40
A 6A 6-28DF01808	28	.728	.714	.895	.250	5/8	.494	19/64	5/32	#6-40

Continued on the next page

FOR 3/16" BELTS
DOUBLE FLANGE

PHONE: 516.328.3300 • FAX: 516.326.8827 • WWW.SDP-SI.COM

> MATERIAL:

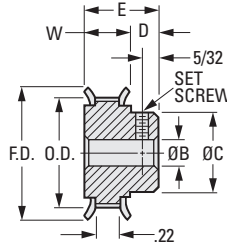
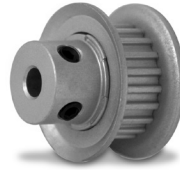
Aluminum Alloy

> FINISH:

Clear Anodized

> SPECIFICATION:

All pulleys have 2 set screws at 90°.



INCH COMPONENT

Catalog Number	No. of Grooves	P.D.	O.D. +.000 - .003	F.D. ± 1/64	B Bore +.001 - .000	W	E Length ± 1/64	C Hub Dia. ± 1/64	D Hub Proj.	Set Screw
A 6A 6-30DF01806	30	.780	.766	.945	.1875	.32	5/8	.546	19/64	#6-40
A 6A 6-30DF01808	30	.780	.766	.945	.250	.32	5/8	.546	19/64	#8-32
A 6A 6-32DF01806	32	.832	.818	1.000	.1875	.32	5/8	.598	19/64	#6-40
A 6A 6-32DF01808	32	.832	.818	1.000	.250	.32	5/8	.598	19/64	#8-32
A 6A 6-33DF01806	33	.858	.844	1.025	.1875	.32	5/8	.624	19/64	#6-40
A 6A 6-33DF01808	33	.858	.844	1.025	.250	.32	5/8	.624	19/64	#8-32
A 6A 6-34DF01806	34	.884	.870	1.050	.1875	.32	5/8	.624	19/64	#6-40
A 6A 6-34DF01808	34	.884	.870	1.050	.250	.32	5/8	.624	19/64	#8-32
A 6A 6-35DF01806	35	.910	.896	1.080	.1875	.32	5/8	.650	19/64	#6-40
A 6A 6-35DF01808	35	.910	.896	1.080	.250	.32	5/8	.650	19/64	#8-32
A 6A 6-36DF01806	36	.936	.922	1.105	.1875	.32	5/8	.676	19/64	#6-40
A 6A 6-36DF01808	36	.936	.922	1.105	.250	.32	5/8	.676	19/64	#8-32
A 6A 6-38DF01808	38	.988	.974	1.155	.250	.32	5/8	.728	19/64	#8-32
A 6A 6-38DF01810	38	.988	.974	1.155	.3125	.32	5/8	.728	19/64	#8-32
A 6A 6-40DF01808	40	1.040	1.026	1.210	.250	.34	21/32	.754	21/64	#8-32
A 6A 6-40DF01810	40	1.040	1.026	1.210	.3125	.34	21/32	.754	21/64	#8-32
A 6A 6-42DF01808	42	1.092	1.078	1.260	.250	.34	21/32	.806	21/64	#8-32
A 6A 6-42DF01810	42	1.092	1.078	1.260	.3125	.34	21/32	.806	21/64	#8-32
A 6A 6-44DF01808	44	1.144	1.130	1.315	.250	.34	21/32	.858	21/64	#8-32
A 6A 6-44DF01810	44	1.144	1.130	1.315	.3125	.34	21/32	.858	21/64	#8-32
A 6A 6-45DF01808	45	1.170	1.156	1.340	.250	.34	21/32	.884	21/64	#8-32
A 6A 6-45DF01810	45	1.170	1.156	1.340	.3125	.34	21/32	.884	21/64	#8-32
A 6A 6-48DF01808	48	1.248	1.234	1.420	.250	.34	21/32	.933	21/64	#8-32
A 6A 6-48DF01810	48	1.248	1.234	1.420	.3125	.34	21/32	.933	21/64	#8-32
A 6A 6-50DF01808	50	1.300	1.286	1.470	.250	.34	21/32	.988	21/64	#8-32
A 6A 6-50DF01810	50	1.300	1.286	1.470	.3125	.34	21/32	.988	21/64	#8-32
A 6A 6-54DF01808	54	1.404	1.390	1.575	.250	.34	21/32	1.066	21/64	#8-32
A 6A 6-54DF01810	54	1.404	1.390	1.575	.3125	.34	21/32	1.066	21/64	#8-32
A 6A 6-60DF01808	60	1.560	1.546	1.730	.250	.34	21/32	1.222	21/64	#8-32
A 6A 6-60DF01810	60	1.560	1.546	1.730	.3125	.34	21/32	1.222	21/64	#8-32

Continued from the previous page