

BELT WIDTHS

INCH - 1/8, 3/16, 1/4, 5/16, & 3/8
 METRIC - 3, 4.5, 6, 8, & 9.5 mm

PHONE: 516.328.3300 • FAX: 516.326.8827 • WWW.SDP-SI.COM

> MATERIAL:

Neoprene - Nylon Covered, Fiberglass Reinforced

> SPECIFICATIONS:

Breaking Strength:

51 lbf per 1/8 in. (72 N per 1 mm) belt width;
 Not representative of the load-carrying
 Capacity of the belt.

Working Tension:

18 lbf for 1 in. Belt (80 n for 25.4 mm belt)
 For more information, see the technical section.

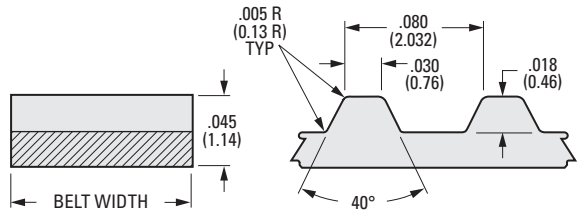
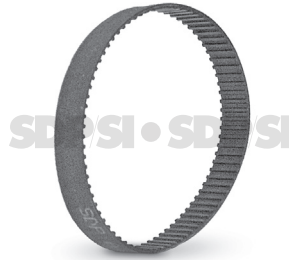
Temperature Range:

-30°F to +185°F (-34°C to +85°C)

> MODIFICATIONS:

Special Widths - cut to size from
 sleeves available from stock.

Pulleys are available with inch
 or metric standards.



NOTE: Dimensions in () are mm.

INCH COMPONENT CATALOG NUMBER

A 6 Z 1 6 - [] [] [] [] []

No. of Grooves Code

Belt Width Inch	Width Code
1/8	012
3/16	018
1/4	025
5/16	031
3/8	037

METRIC COMPONENT CATALOG NUMBER

A 6 Z 1 6 M [] [] [] [] []

No. of Grooves Code

Belt Width mm	Width Code
3	030
4.5	045
6	060
8	080
9.5	095

Groove Code	Pitch Length	
	Inch	mm
036	2.88	73.15
037	2.96	75.18
039	3.12	79.25
040	3.20	81.28
041	3.28	83.31
042	3.36	85.34
043	3.44	87.38
044	3.52	89.41
045	3.60	91.44
046	3.68	93.47
047	3.76	95.5
048	3.84	97.54
049	3.92	99.57
050	4.00	101.6
052	4.16	105.66
053	4.24	107.7
054	4.32	109.73
055	4.40	111.76
056	4.48	113.79
057	4.56	115.82
058	4.64	117.86
059	4.72	119.89
060	4.80	121.92
061	4.88	123.95
062	4.96	125.98
063	5.04	128.02
064	5.12	130.05
065	5.20	132.08

Groove Code	Pitch Length	
	Inch	mm
067	5.36	136.14
068	5.44	138.18
069	5.52	140.21
070	5.60	142.24
071	5.68	144.27
072	5.76	146.3
073	5.84	148.34
074	5.92	150.37
075	6.00	152.4
076	6.08	154.43
077	6.16	156.46
078	6.24	158.5
079	6.32	160.53
080	6.40	162.56
081	6.48	164.59
082	6.56	166.62
083	6.64	168.66
084	6.72	170.69
085	6.80	172.72
086	6.88	174.75
087	6.96	176.78
088	7.04	178.82
089	7.12	180.85
090	7.20	182.88
091	7.28	184.91
092	7.36	186.94
093	7.44	188.98
094	7.52	191.01

Continued on the next page



Groove Code	Pitch Length	
	Inch	mm
095	7.60	193.04
096	7.68	195.07
097	7.76	197.1
098	7.84	199.14
099	7.92	201.17
100	8.00	203.2
101	8.08	205.23
102	8.16	207.26
103	8.24	209.3
104	8.32	211.33
105	8.40	213.36
106	8.48	215.39
107	8.56	217.42
108	8.64	219.46
109	8.72	221.49
110	8.80	223.52
112	8.96	227.58
114	9.12	231.65
115	9.20	233.68
117	9.36	237.74
118	9.44	239.78
119	9.52	241.81
120	9.60	243.84
122	9.76	247.9
123	9.84	249.94
124	9.92	251.97
125	10.00	254
126	10.08	256.03
127	10.16	258.06
128	10.24	260.1
129	10.32	262.13
130	10.40	264.16
131	10.48	266.19
132	10.56	268.22
134	10.72	272.29
135	10.80	274.32
136	10.88	276.35
137	10.96	278.38
138	11.04	280.42
139	11.12	282.45
140	11.20	284.48
142	11.36	288.54
143	11.44	290.58
144	11.52	292.61
145	11.60	294.64

Groove Code	Pitch Length	
	Inch	mm
146	11.68	296.67
148	11.84	300.74
149	11.92	302.77
150	12.00	304.8
151	12.08	306.83
153	12.24	310.9
154	12.32	312.93
155	12.40	314.96
156	12.48	316.99
158	12.64	321.06
159	12.72	323.09
160	12.80	325.12
162	12.96	329.18
163	13.04	331.22
164	13.12	333.25
165	13.20	335.28
166	13.28	337.31
167	13.36	339.34
169	13.52	343.41
170	13.60	345.44
171	13.68	347.47
175	14.00	355.6
177	14.16	359.66
180	14.40	365.76
184	14.72	373.89
186	14.88	377.95
188	15.04	382.02
190	15.20	386.08
192	15.36	390.14
194	15.52	394.21
195	15.60	396.24
196	15.68	398.27
200	16.00	406.4
203	16.24	412.5
204	16.32	414.53
205	16.40	416.56
208	16.64	422.66
210	16.80	426.72
212	16.96	430.78
215	17.20	436.88
216	17.28	438.91
220	17.60	447.04
221	17.68	449.07
222	17.76	451.1
224	17.92	455.17

Groove Code	Pitch Length	
	Inch	mm
225	18.00	457.2
226	18.08	459.23
228	18.24	463.3
229	18.32	465.33
230	18.40	467.36
232	18.56	471.42
234	18.72	475.49
235	18.80	477.52
236	18.88	479.55
239	19.12	485.65
240	19.20	487.68
243	19.44	493.78
245	19.60	497.84
248	19.84	503.94
249	19.92	505.97
250	20.00	508
251	20.08	510.03
255	20.40	518.16
256	20.48	520.19
260	20.80	528.32
262	20.96	532.38
265	21.20	538.48
267	21.36	542.54
268	21.44	544.58
271	21.68	550.67
273	21.84	554.74
275	22.00	558.8
280	22.40	568.96
281	22.48	570.99
285	22.80	579.12
288	23.04	585.22
290	23.20	589.28
295	23.60	599.44
297	23.76	603.5
298	23.84	605.54
300	24.00	609.6
305	24.40	619.76
308	24.64	625.86
310	24.80	629.92
312	24.96	633.98
315	25.20	640.08
318	25.44	646.18
320	25.60	650.24
322	25.76	654.3
323	25.84	656.34

Continued from the previous page
and Continued on the next page



INCH COMPONENT CATALOG NUMBER

A 6Z16-

No. of Grooves Code

Belt Width Inch	Width Code
1/8	012
3/16	018
1/4	025
5/16	031
3/8	037

METRIC COMPONENT CATALOG NUMBER

A 6Z16M

No. of Grooves Code

Belt Width mm	Width Code
3	030
4.5	045
6	060
8	080
9.5	095

Groove Code	Pitch Length	
	Inch	mm
324	25.92	658.37
325	26.00	660.4
326	26.08	662.43
328	26.24	666.5
330	26.40	670.56
332	26.56	674.62
334	26.72	678.69
336	26.88	682.75
337	26.96	684.78
338	27.04	686.82
339	27.12	688.85
340	27.20	690.88
342	27.36	694.94
343	27.44	696.98
347	27.76	705.1
350	28.00	711.2
354	28.32	719.33
355	28.40	721.36
356	28.48	723.39
358	28.64	727.46
359	28.72	729.49
360	28.80	731.52
364	29.12	739.65
365	29.20	741.68
371	29.68	753.87
372	29.76	755.9
380	30.40	772.16
388	31.04	788.42
390	31.20	792.48
397	31.76	806.7
400	32.00	812.8
402	32.16	816.86
405	32.40	822.96
408	32.64	829.06
410	32.80	833.12
412	32.96	837.18
413	33.04	839.22
419	33.52	851.41
420	33.60	853.44
421	33.68	855.47
424	33.92	861.57
425	34.00	863.6
427	34.16	867.66
431	34.48	875.79
434	34.72	881.89
435	34.80	883.92
436	34.88	885.95

Groove Code	Pitch Length	
	Inch	mm
440	35.20	894.08
442	35.36	898.14
447	35.76	908.3
448	35.84	910.34
453	36.24	920.5
458	36.64	930.66
463	37.04	940.82
464	37.12	942.85
466	37.28	946.91
468	37.44	950.98
472	37.76	959.1
473	37.84	961.14
475	38.00	965.2
480	38.40	975.36
482	38.56	979.42
487	38.96	989.58
488	39.04	991.62
490	39.20	995.68
493	39.44	1001.78
497	39.76	1009.9
498	39.84	1011.94
500	40.00	1016
505	40.40	1026.16
516	41.28	1048.51
522	41.76	1060.7
524	41.92	1064.77
525	42.00	1066.8
532	42.56	1081.02
535	42.80	1087.12
537	42.96	1091.18
540	43.20	1097.28
543	43.44	1103.38
546	43.68	1109.47
548	43.84	1113.54
550	44.00	1117.6
571	45.68	1160.27
591	47.28	1200.91
592	47.36	1202.94
599	47.92	1217.17
600	48.00	1219.2
612	48.96	1243.58
648	51.84	1316.74
665	53.20	1351.28
694	55.52	1410.21
913	73.04	1855.22
*1189	95.12	2416.05

* The catalog number for this length belt is A 6Z16 B89

Continued from the previous page

- I
- R
- T
- 1
- 2
- 3
- 4
- 5
- 6
- 7
- 8
- 9
- 10
- 11
- 12
- 13
- 14
- 15
- 16