

TWO-PIECE BALANCED SHAFT/HUB CLAMPS



PRECISION AND COMMERCIAL

PHONE: 516.328.3300 • FAX: 516.326.8827 • WWW.SDP-SI.COM

> MATERIAL:

416 Stainless Steel (Rc 38-45)

> SPECIFICATIONS:



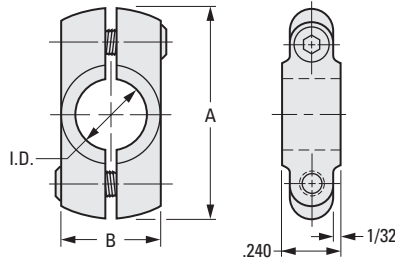
Precision Tolerances	
Decimals	± .005
Fractions	± 1/64

Commercial Tolerances	
Decimals	± .010
Fractions	± 1/32

I.D. Tolerances	
Precision	+0.001 -.000
Commercial	+0.002 -.000



#2-56 Stainless Steel socket head cap screws supplied.



INCH COMPONENT

Catalog Number		Shaft Size	I.D.*	A	B	Clearance Radius
Precision	Commercial					
Type of Balance: Dynamically Balanced						
S3400Y-C240-3	S3400Y-J240-3	1/8	.188	23/32	5/16	23/64
S3400Y-C240-4	S3400Y-J240-4	3/16	.250	3/4	3/8	3/8
S3400Y-C240-5	S3400Y-J240-5	1/4	.312	7/8	7/16	7/16
Type of Balance: As Machined						
S3400Y-C241-3	S3400Y-J241-3	1/8	.188	23/32	5/16	23/64
S3400Y-C241-4	S3400Y-J241-4	3/16	.250	3/4	3/8	3/8
S3400Y-C241-5	S3400Y-J241-5	1/4	.312	7/8	7/16	7/16

* Dimensions apply before slot is made.

- I
- R
- T
- 1
- 2
- 3
- 4
- 5
- 6
- 7
- 8
- 9
- 10
- 11
- 12
- 13
- 14
- 15
- 16