

# TWO-PIECE BALANCED SHAFT/HUB CLAMPS



## PRECISION

PHONE: 516.328.3300 • FAX: 516.326.8827 • WWW.SDP-SI.COM

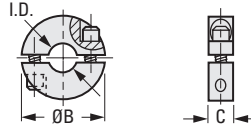
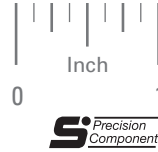
### > MATERIAL:

303 Stainless Steel  
2024-T351 Aluminum, Anodized

### > SPECIFICATIONS:

Tolerances	
Decimals	± .005
Fractions	± 1/64

Stainless Steel socket head cap screws supplied.



INCH COMPONENT		I.D.* +.001 -.000	B Dia.	C	Screw Size	Clearance Radius
Catalog Number						
303 Stainless Steel	2024-T351 Aluminum Anodized					
S3402Y-C225	S3402Y-C228	.188	7/8	.250	#6-32	33/64
S3402Y-C226	S3402Y-C229	.250				
S3402Y-C227	S3402Y-C230	.313				
S3402Y-C231	S3402Y-C234	.125	9/16	.156	#2-56	25/64
S3402Y-C232	S3402Y-C235	.188				
S3402Y-C233	S3402Y-C236	.250				

\* Dimensions apply before slot is made.

## COMMERCIAL

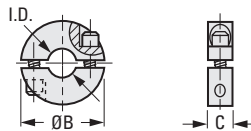
### > MATERIAL:

303 Stainless Steel  
2024-T351 Aluminum

### > SPECIFICATIONS:

Tolerances	
Decimals	± .010
Fractions	± 1/32

Stainless Steel socket head cap screws supplied.



INCH COMPONENT		I.D.* +.002 -.000	B Dia.	C	Screw Size	Clearance Radius
Catalog Number						
303 Stainless Steel	2024-T351 Aluminum					
S3402Y-J225	S3402Y-J228	.188	7/8	.250	#6-32	33/64
S3402Y-J226	S3402Y-J229	.250				
S3402Y-J227	S3402Y-J230	.313				
S3402Y-J231	S3402Y-J234	.125	9/16	.156	#2-56	25/64
S3402Y-J232	S3402Y-J235	.188				
S3402Y-J233	S3402Y-J236	.250				

\* Dimensions apply before slot is made.

