

# COMMERCIAL SPLIT SHAFT/HUB CLAMPS



## > MATERIAL:

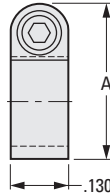
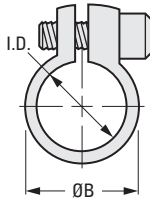
303 Stainless Steel

PHONE: 516.328.3300 • FAX: 516.326.8827 • WWW.SDP-SI.COM

## > SPECIFICATIONS:

Tolerances	
Decimals	± .010
Fractions	± 1/32

Stainless Steel socket head cap screw supplied.



## INCH COMPONENT

Catalog Number	I.D.* +.002 -.000	A ± .016	B Dia.	Screw Size	Clearance Radius
S3503Y-J058	.125	.305	.190	#2-56	9/32
S3503Y-J059	.187	.370	.250		5/16
S3503Y-J060	.250	.435	.310		11/32

\* Dimensions apply before slot is made.

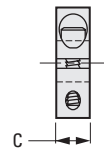
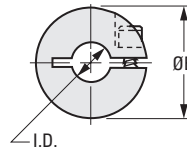
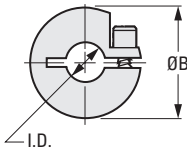
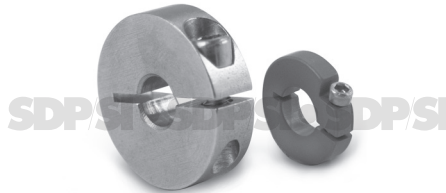
## > MATERIAL:

303 Stainless Steel  
2024-T351 Aluminum

## > SPECIFICATIONS:

Tolerances	
Decimals	± .010
Fractions	± 1/32

Stainless Steel socket head cap screw supplied.



**NOTE:** Notched style will be discontinued when stock is depleted. Either style may be supplied at SI option.

## INCH COMPONENT

Catalog Number		Shaft Size	I.D.* +.002 -.000	B Dia.	C	Screw Size	Clearance Radius
303 Stainless Steel	2024-T351 Aluminum						
S3501Y-J062	S3501Y-J065	.125	.188	7/8	.250	#6-32	33/64
S3501Y-J063	S3501Y-J066	.187	.250				
S3501Y-J064	S3501Y-J067	.250	.313				
S3501Y-J068	S3501Y-J071	.093	.125	5/8	.156	#2-56	3/8
S3501Y-J069	S3501Y-J072	.125	.188				
S3501Y-J070	S3501Y-J073	.187	.250				
S3501Y-J074	S3501Y-J077	.093	.125	9/16	.125	#1-72	
S3501Y-J075	S3501Y-J078	.125	.188				
S3501Y-J076	S3501Y-J079	.187	.250				
S3501Y-J075M	S3501Y-J078M	.125	.188				
S3501Y-J076M	S3501Y-J079M	.187	.250				

\* Dimensions apply before slot is made.

4-43  
D820

1

R

T

1

2

3

4

5

6

7

8

9

10

11

12

13

14

15

16