

PRECISION SPLIT SHAFT/HUB CLAMPS



I

R

T

1

2

3

4

5

6

7

8

9

10

11

12

13

14

15

16

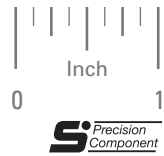
> MATERIAL:

303 Stainless Steel

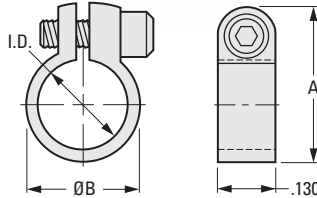
PHONE: 516.328.3300 • FAX: 516.326.8827 • WWW.SDP-SI.COM

> SPECIFICATIONS:

Tolerances	
Decimals	± .005
Fractions	± 1/64



Stainless Steel socket head cap screw supplied.



INCH COMPONENT

Catalog Number	I.D.* +.001 -.000	A ± .008	B Dia.	Screw Size	Clearance Radius
S3503Y-C058	.125	.305	.190	#2-56	9/32
S3503Y-C059	.187	.370	.250		5/16
S3503Y-C060	.250	.435	.310		11/32

* Dimensions apply before slot is made.

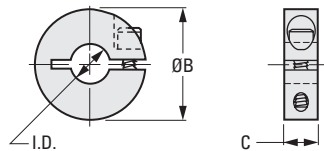
> MATERIAL:

303 Stainless Steel
2024-T351 Aluminum, Anodized



> SPECIFICATIONS:

Tolerances	
Decimals	± .005
Fractions	± 1/64



Stainless Steel socket head cap screw supplied.

INCH COMPONENT

Catalog Number		I.D.* +.001 -.000	B Dia.	C	Screw Size	Clearance Radius
303 Stainless Steel	2024-T351 Aluminum Anodized					
S3501Y-C062	S3501Y-C065	.188	7/8	.250	#6-32	33/64
S3501Y-C063	S3501Y-C066	.250				
S3501Y-C064	S3501Y-C067	.313				
S3501Y-C068	S3501Y-C071	.125	5/8	.156	#2-56	3/8
S3501Y-C069	S3501Y-C072	.188				
S3501Y-C070	S3501Y-C073	.250				
S3501Y-C074	S3501Y-C077	.125	9/16	.125	#1-72	
S3501Y-C075	S3501Y-C078	.188				
S3501Y-C076	S3501Y-C079	.250				
S3501Y-C075M	S3501Y-C078M	.188				
S3501Y-C076M	S3501Y-C079M	.250				

* Dimensions apply before slot is made.

4-42
D-820

REVISED:
6/26/23