

# PRECISION SPLIT SHAFT/HUB CLAMPS



REDUCED CLEARANCE RADIUS

PHONE: 516.328.3300 • FAX: 516.326.8827 • WWW.SDP-SI.COM

**> MATERIAL:**

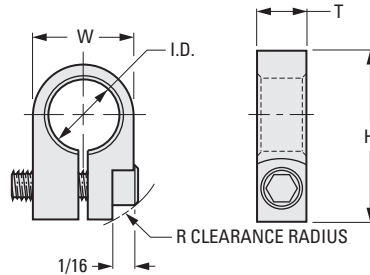
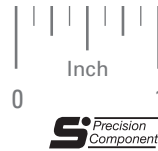
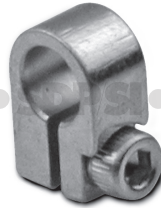
- Carbon Steel, Zinc Plated
- 303 Stainless Steel
- 416 Stainless Steel (Rc 38-45)

**> SPECIFICATIONS:**

Tolerances	
Decimals	± .005
Fractions	± 1/64

Stainless Steel socket head cap screw supplied.

SDPSI • SDPSI



## INCH COMPONENT

Catalog Number	Shaft Size	I.D.* +.001 -.000	H	T	W	Screw Size	R
<b>Carbon Steel, Zinc Plated</b>							
S3701Y-C118	1/8	.188	15/32	.140	.312	#2-56	5/16
S3701Y-C119	3/16	.251	1/2		.375		23/64
S3701Y-C120	1/4	.313	19/32		.437		25/64
S3701Y-C121	5/16	.376	21/32		.500		7/16
S3701Y-C122	3/8	.438	25/32		.625		33/64
<b>303 Stainless Steel</b>							
S3701Y-C118S	1/8	.188	15/32	.140	.312	#2-56	5/16
S3701Y-C119S	3/16	.251	1/2		.375		23/64
S3701Y-C120S	1/4	.313	19/32		.437		25/64
S3701Y-C121S	5/16	.376	21/32		.500		7/16
S3701Y-C122S	3/8	.438	25/32		.625		33/64
<b>Carbon Steel, Zinc Plated</b>							
S3701Y-C108	1/8	.188	15/32	.250	.312	#6-32	3/8
S3701Y-C109	3/16	.251	9/16		.375		29/64
S3701Y-C110	1/4	.313	19/32		.437		15/32
S3701Y-C111	5/16	.376	21/32		.500		33/64
S3701Y-C112	3/8	.438	25/32		.625		19/32
<b>303 Stainless Steel</b>							
S3701Y-C108S	1/8	.188	15/32	.250	.312	#6-32	3/8
S3701Y-C109S	3/16	.251	9/16		.375		29/64
S3701Y-C110S	1/4	.313	19/32		.437		15/32
S3701Y-C111S	5/16	.376	21/32		.500		33/64
S3701Y-C112S	3/8	.438	25/32		.625		19/32
<b>416 Stainless Steel (Rc 38-45)</b>							
S3701Y-C108X	1/8	.188	15/32	.250	.312	#6-32	3/8
S3701Y-C109X	3/16	.251	9/16		.375		29/64
S3701Y-C110X	1/4	.313	19/32		.437		15/32
S3701Y-C111X	5/16	.376	21/32		.500		33/64
S3701Y-C112X	3/8	.438	25/32		.625		19/32

\* Dimensions apply before slot is made.

4-40  
D-820

REVISED:  
6/19/23

