

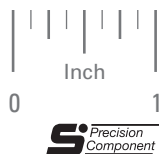
PRECISION SPLIT SHAFT/HUB CLAMPS

SDP/SI

> MATERIAL:

Carbon Steel, Zinc Plated
303 Stainless Steel
416 Stainless Steel (Rc 38-45)

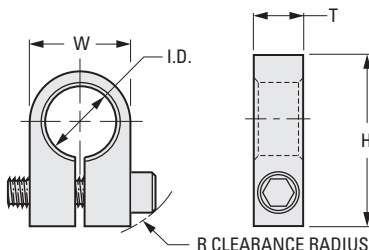
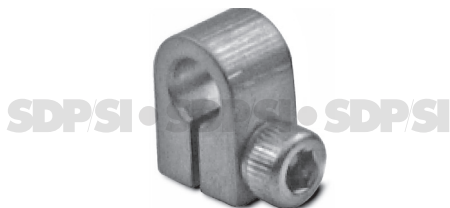
PHONE: 516.328.3300 • FAX: 516.326.8827 • WWW.SDP-SI.COM



> SPECIFICATIONS:

Tolerances	
Decimals	± .005
Fractions	± 1/64

Stainless Steel socket head cap screw supplied.



INCH COMPONENT

Catalog Number	Shaft Size	I.D.* +.001 -.000	H	T	W	Screw Size	R
Carbon Steel, Zinc Plated							
S3700Y-C113	1/8	.188	15/32	.140	.312	#2-56	11/32
S3700Y-C114	3/16	.251	1/2		.375		25/64
S3700Y-C115	1/4	.313	19/32		.437		7/16
S3700Y-C116	5/16	.376	21/32		.500		15/32
S3700Y-C117	3/8	.438	25/32		.625		9/16
303 Stainless Steel							
S3700Y-C113S	1/8	.188	15/32	.140	.312	#2-56	11/32
S3700Y-C114S	3/16	.251	1/2		.375		25/64
S3700Y-C115S	1/4	.313	19/32		.437		7/16
S3700Y-C116S	5/16	.376	21/32		.500		15/32
S3700Y-C117S	3/8	.438	25/32		.625		9/16
Carbon Steel, Zinc Plated							
S3700Y-C143-2	1/8	.188	15/32	.250	.312	#6-32	27/64
S3700Y-C143-3	3/16	.251	9/16		.375		31/64
S3700Y-C143-4	1/4	.313	19/32		.437		1/2
S3700Y-C143-5	5/16	.376	21/32		.500		9/16
S3700Y-C143-6	3/8	.438	25/32		.625		41/64
303 Stainless Steel							
S3700Y-C143-2S	1/8	.188	15/32	.250	.312	#6-32	27/64
S3700Y-C143-3S	3/16	.251	9/16		.375		31/64
S3700Y-C143-4S	1/4	.313	19/32		.437		1/2
S3700Y-C143-5S	5/16	.376	21/32		.500		9/16
S3700Y-C143-6S	3/8	.438	25/32		.625		41/64
416 Stainless Steel (Rc 38-45)							
S3700Y-C143-2X	1/8	.188	15/32	.250	.312	#6-32	27/64
S3700Y-C143-3X	3/16	.251	9/16		.375		31/64
S3700Y-C143-4X	1/4	.313	19/32		.437		1/2
S3700Y-C143-5X	5/16	.376	21/32		.500		9/16
S3700Y-C143-6X	3/8	.438	25/32		.625		41/64

* Dimensions apply before slot is made.

1

R

T

1

2

3

4

5

6

7

8

9

10

11

12

13

14

15

16