

PRECISION RACKS



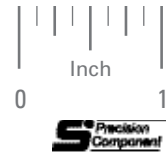
20° PRESSURE ANGLE

PHONE: 516.328.3300 • FAX: 516.326.8827 • WWW.SDP-SI.COM

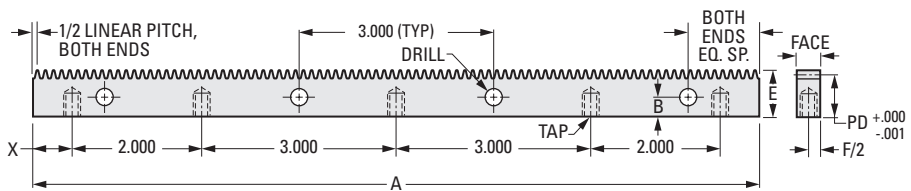
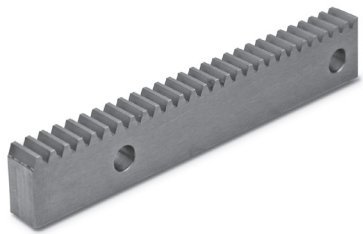
> MATERIAL:

416 Stainless Steel

Available on special order:
14-1/2° P.A., other materials, and hole
layouts, passivation.



Rack Tolerances	
Tooth to tooth spacing error	.0005
Total accumulated spacing error	.002
Parallelism of pitch line to base	.001



INCH COMPONENT

Catalog Number	Pitch	A +0.000 -0.005	E +0.000 -0.005	X ± .005	Face ± .002
S1819Y-RD-01P	16	11.185	.725	.591	.365 ± .010
S1819Y-RD-02P	20	11.147		.572	
S1819Y-RD-03P	24	11.120	.480	.558	.230
S1819Y-RD-04P	1/10	10.994		.495	
S1819Y-RD-05P	32	11.087		.542	
S1819Y-RD-06P	48	11.055		.526	
S1819Y-RD-07P	1/20	10.994		.495	
S1819Y-RD-08P	64	11.038		.518	
S1819Y-RD-09P	72	11.033		.515	
S1819Y-RD-10P	80	11.028	.355	.513	.167
S1819Y-RD-11P	96	11.022	.510		

Catalog Number (Ref. Only)	B	PD Pitch Distance	Linear Pitch	Drill	Tap
S1819Y-RD-01P	.312	.6625	.1963	.266	#10-32 x 3/8
S1819Y-RD-02P		.6750	.1570		
S1819Y-RD-03P		.4383	.1309		
S1819Y-RD-04P	.218	.4482	.1000	.147	#6/32 x 1/4
S1819Y-RD-05P		.4487	.0982		
S1819Y-RD-06P		.4592	.0654		
S1819Y-RD-07P		.4641	.0500		
S1819Y-RD-08P		.4644	.0491		
S1819Y-RD-09P	.156	.3411	.0436	.120	#4-40 x 3/16
S1819Y-RD-10P		.3425	.0393		
S1819Y-RD-11P		.3446	.0327		

1-192
D820

REVISED:
6/26/23

- I
- R
- T
- 1
- 2
- 3
- 4
- 5
- 6
- 7
- 8
- 9
- 10
- 11
- 12
- 13
- 14
- 15
- 16