

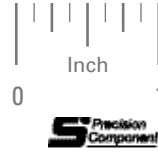
20° PRESSURE ANGLE

PHONE: 516.328.3300 • FAX: 516.326.8827 • WWW.SDP-SI.COM

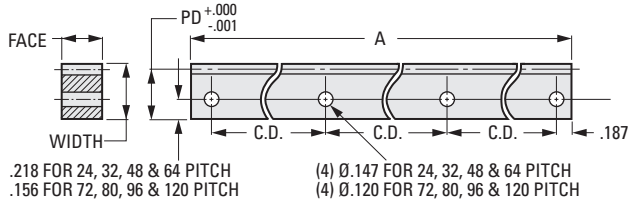
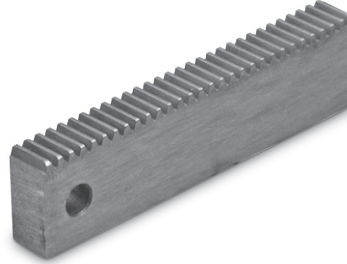
**> MATERIAL:**

- 416 Stainless Steel
- 2024-T4 Aluminum, Chromic Acid Anodized (non-RoHS Compliant)

Available on special order:  
14-1/2° P.A., other materials and hole layouts, passivation for Stainless Steel.



Rack Tolerances	
Tooth to tooth spacing error	.0005
Total accumulated spacing error	.002
Parallelism of pitch line to base	.001



**INCH COMPONENT**

Catalog Number	Material	Pitch	PD Pitch Distance	C.D.	Face ± .002	A ± .01 in.	Width +.000 -0.002	
S1811Y-RC-1	Stainless Steel	24	.4383	3.208	.230	10	.480	
S1811Y-RC-1A	Aluminum							
S1811Y-RC-2	Stainless Steel	32	.4487	2.875		.167		9
S1811Y-RC-2A	Aluminum							
S1811Y-RC-3	Stainless Steel	48	.4592	2.208				7
S1811Y-RC-4	Stainless Steel	64	.4644	2.208		.167		5
S1811Y-RC-4A	Aluminum							
S1810Y-RC-5	Stainless Steel	72	.3411	1.541	5			
S1810Y-RC-5A	Aluminum							
S1810Y-RC-6	Stainless Steel	80	.3425	1.541	3			
S1810Y-RC-6A	Aluminum							
S1810Y-RC-7	Stainless Steel	96	.3446	.875	3			
S1810Y-RC-7A	Aluminum							
S1810Y-RC-8	Stainless Steel	120	.3467	.875	3			
S1810Y-RC-8A	Aluminum							

1-191  
D820

REVISED:  
6/26/23

- I
- R
- T
- 1
- 2
- 3
- 4
- 5
- 6
- 7
- 8
- 9
- 10
- 11
- 12
- 13
- 14
- 15
- 16