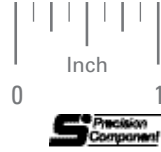


**> MATERIAL:**

416 Stainless Steel

Available on special order:  
14-1/2° P.A., teeth not listed,  
different material, passivation  
for Stainless Steel.



| Rack Tolerances                   |       |
|-----------------------------------|-------|
| Tooth to tooth spacing error      | .0005 |
| Total accumulated spacing error   | .002  |
| Parallelism of pitch line to base | .001  |

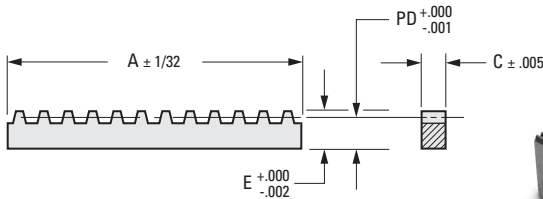


Fig. 1

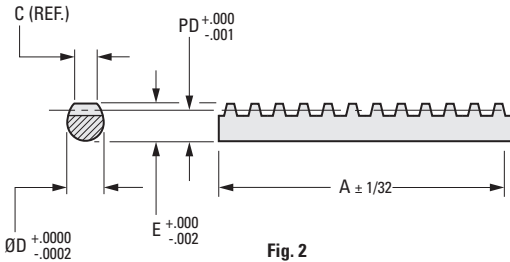
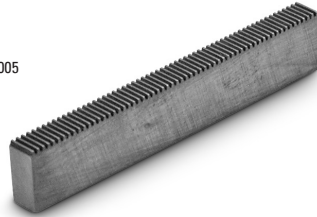
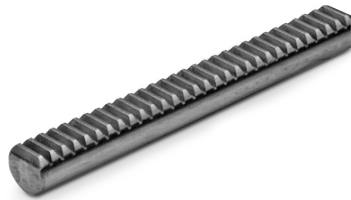


Fig. 2



**INCH COMPONENT**

| Catalog Number                 | Pitch | A     | PD Pitch Distance | C           | D Dia. | E    |      |       |      |
|--------------------------------|-------|-------|-------------------|-------------|--------|------|------|-------|------|
| <b>Fig. 1 Rectangular Rack</b> |       |       |                   |             |        |      |      |       |      |
| S1811Y-RB-1P                   | 24    | 18    | .4383             | .230        | —      | .480 |      |       |      |
| S1811Y-RB-2P                   | 32    |       | .4487             |             |        |      |      |       |      |
| S1811Y-RB-3P                   | 48    |       | .4592             |             |        |      |      |       |      |
| S1811Y-RB-4P                   | 64    |       | .4644             |             |        |      |      |       |      |
| S1810Y-RB-5P                   | 72    | 11    | .3411             | .167        | —      | .355 |      |       |      |
| S1810Y-RB-6P                   | 96    |       | .3446             |             |        |      |      |       |      |
| S1810Y-RB-7P                   | 120   |       | .3467             |             |        |      |      |       |      |
| <b>Fig. 2 Round Rack</b>       |       |       |                   |             |        |      |      |       |      |
| S1809Y-RA-1P                   | 24    | 18    | .4383             | .188 - .194 | .4997  | .480 |      |       |      |
| S1808Y-RA-2P                   | 32    |       | .3087             | .217        | .3747  | .340 |      |       |      |
| S1807Y-RA-3P                   | 48    |       | .1992             | .156 - .162 | .2497  | .220 |      |       |      |
| S1807Y-RA-4P                   | 64    | .2044 |                   |             |        |      |      |       |      |
| S1805Y-RA-5P                   | 72    | 11    | .1421             | .140        | .1872  | .156 |      |       |      |
| S1805Y-RA-6P                   | 96    |       | .1456             |             |        |      |      |       |      |
| S1804Y-RA-7P                   | 120   |       | .1067             |             |        |      | .067 | .1247 | .115 |

1-190  
D820

REVISED:  
6/26/23

- I
- R
- T
- 1
- 2
- 3
- 4
- 5
- 6
- 7
- 8
- 9
- 10
- 11
- 12
- 13
- 14
- 15
- 16