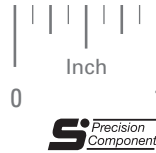


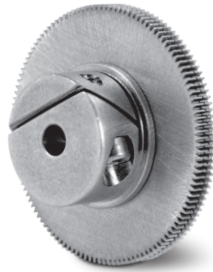
AGMA 10
 .104 FACE
 20° PRESSURE ANGLE

PHONE: 516.328.3300 • FAX: 516.326.8827 • WWW.SDP-SI.COM



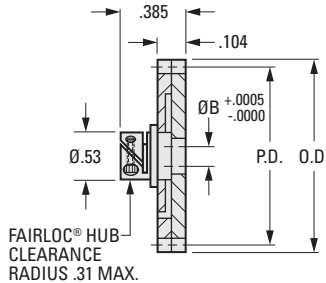
> MATERIAL:

- Gears** - 303 Stainless Steel
 2024-T4 of -T351 Aluminum Alloy,
 anodized before cutting.
- Hubs** - 303 Stainless Steel
- Springs** - 302 Stainless Steel, Torsion Type,
 Spring Temper

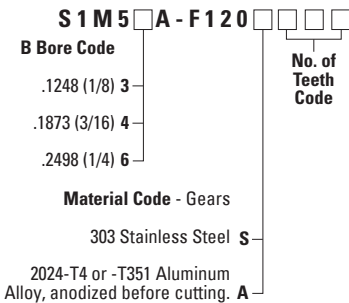


Available on special order:
 14-1/2° P.A., teeth not listed, different
 bore size, passivation for Stainless Steel.

Fairloc® hubs require controlled shaft tolerances.
 Suggested clearance fit between the bore and the
 shaft is .0001/.0008.



INCH COMPONENT CATALOG NUMBER



No. of Teeth Code	No. of Teeth	P.D.	O.D.
075	75	.6250	.642
080	80	.6667	.683
084	84	.7000	.717
085	85	.7083	.725
090	90	.7500	.767
095	95	.7917	.808
096	96	.8000	.817
100	100	.8333	.850
105	105	.8750	.892
110	110	.9167	.933
115	115	.9583	.975
120	120	1.0000	1.017
125	125	1.0417	1.058
130	130	1.0833	1.100
132	132	1.1000	1.117
135	135	1.1250	1.142
140	140	1.1667	1.183
144	144	1.2000	1.217
145	145	1.2083	1.225
148	148	1.2333	1.250

Example:
 S1M56A-F120A090 is an Aluminum Mini-Lash
 Gear with 90 Teeth and .2498 Bore Fairloc® Hub.

- I
- R
- T
- 1**
- 2
- 3
- 4
- 5
- 6
- 7
- 8
- 9
- 10
- 11
- 12
- 13
- 14
- 15
- 16