

INVERTED DESIGN UNIVERSAL JOINTS

SDP/SI

SINGLE & DOUBLE JOINT
ZERO BACKLASH

PHONE: 516.328.3300 • FAX: 516.326.8827 • WWW.SDP-SI.COM

➤ **MATERIAL:**

Body - 303 Stainless Steel
Balls - 440 Stainless Steel

➤ **LUBRICATION:**

Dry Film Plus Oil Suspension

➤ **FEATURES:**

Zero backlash is attained with patented design and close dimensional control of components. Torque is transmitted by hardened steel balls operating in burnished sockets. Elastic preload between components eliminates all clearances. Inverted design reduces size and weight for a given torque capacity. Inverted design reduces inertia. Sealed-in lubrication.

➤ **SPECIFICATIONS:**

Torque Ratings - For static conditions with in-line loading.
Max. Operating Speed @ 0°: 4000 rpm
Max. Operating Angle - Fig. 1: 20° @ 2000 rpm
Fig. 2: 40° @ 2000 rpm

Set screws available on special order.

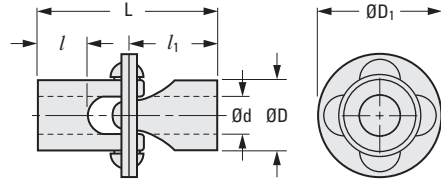
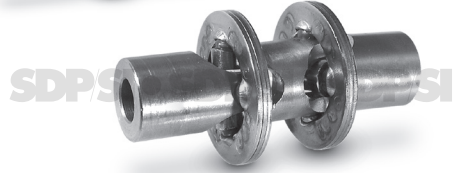
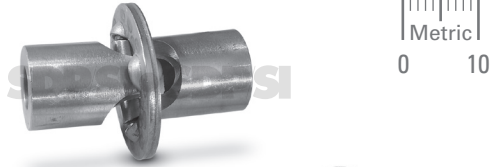


Fig. 1

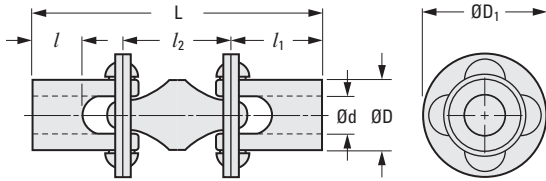


Fig. 2

METRIC COMPONENT

Catalog Number	D Dia.	d Bore +0.025 0	l Bore Depth	l ₁ End Unit	l ₂ Center	L Overall Length	D ₁ Dia.	Torque N • m
Fig. 1 Single Joint								
S57PY4MSFU0519	9.53	5	9.5	19.1	—	38.1	19.1	1.8
S57PY4MSFU0619		6						
S57PY4MSFU0724	12.71	7	11.1	20.7		41.4	23.8	2.3
S57PY4MSFU0824		8						
S57PY4MSFU1035	19.06	10	15.9	25.4		50.8	35.1	3.4
S57PY4MSFU1248	25.41	12	22.2	33.5		66.8	47.8	8.5
S57PY4MSFU1448		14						
Fig. 2 Double Joint								
S57PY4MDFU0519	9.53	5	9.5	19.1	15.9	54.1	19.1	1.8
S57PY4MDFU0619		6						
S57PY4MDFU0724	12.71	7	11.1	20.7	19.9	61.2	23.8	2.3
S57PY4MDFU0824		8						
S57PY4MDFU1035	19.06	10	15.9	25.4	22.2	73.2	35.1	3.4
S57PY4MDFU1248	25.41	12	22.2	33.5	31.8	98.6	47.8	8.5
S57PY4MDFU1448		14						

I
R
T
1
2
3
4
5
6
7
8
9
10
11
12
13
14
A