

TWO-PIECE JUNIOR COUPLINGS

SDPSI

CROWNED GEAR TEETH
 CHEMICAL-RESISTANT NYLON
 NO NEED FOR LUBRICATION
 ELECTRICALLY ISOLATED

PHONE: 516.328.3300 • FAX: 516.326.8827 • WWW.SDP-SI.COM



> MATERIAL:

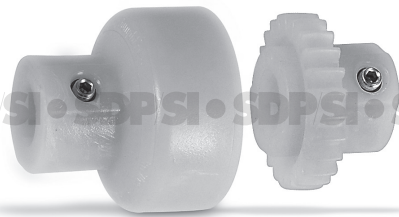
Nylon

> OPERATING TEMPERATURE:

-25°C to +100°C

> MAX. OPERATING SPEED:

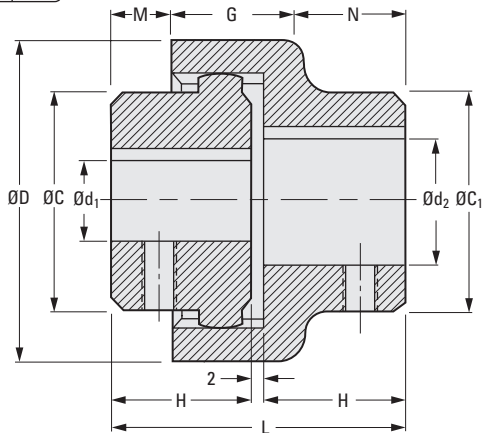
6000 rpm



SDPSI • SDPSI • SDPSI • SDPSI

- I
- R
- T
- 1
- 2
- 3
- 4
- 5
- 6**
- 7
- 8
- 9
- 10
- 11
- 12
- 13
- 14
- 15
- A

Keyway Dimensions								
Bore	6	8	10	12	14	16	18	20
w	2	2	3	4	5	5	6	6
t	1	1	1.4	1.8	2.3	2.3	2.8	2.8



METRIC COMPONENT

Catalog Number	d ₁ Bore	d ₂ Bore	C	C ₁	D	H	L	M	N	G	Torque N • m	
											Nom.	Max.
BoWex® Size JR-14												
S5911YMJR140610	6	10	22	25	40	23	48	8	17	23	5	10
S5911YMJR140810	8											
S5911YMJR141010	10											
S5911YMJR141212	12	12	26	26	40	23	48	8	17	23	5	10
S5911YMJR141214	12	14										
S5911YMJR141414	14											
BoWex® Size JR-19												
S5911YMJR191214	12	14	27	29	48	25	52	10	19	23	8	16
S5911YMJR191414	14											
S5911YMJR191614	16											
BoWex® Size JR-24												
S5911YMJR241014	10	14	26	32	52	26	54	9	20	25	12	24
S5911YMJR241214	12											
S5911YMJR241414	14	14	32	32								
S5911YMJR241614	16											
S5911YMJR241820	18											
S5911YMJR242020	20	20	36	36								

NOTES: 1. Hub diameters (C, C₁) are not to exceed dimensions; some smaller bores may have smaller hub diameters.
 2. M5 set-screw, located 180° opposite from keyway.