

SET SCREW HUB

PHONE: 516.328.3300 • FAX: 516.326.8827 • WWW.SDP-SI.COM

> MATERIAL:

Hubs - 06, 09 & 13 Series - Brass, Bright Dip
 15 Thru 41 Series - Aluminum, Clear Anodized
 Torque Disc - Acetal

> OPERATING TEMPERATURE:

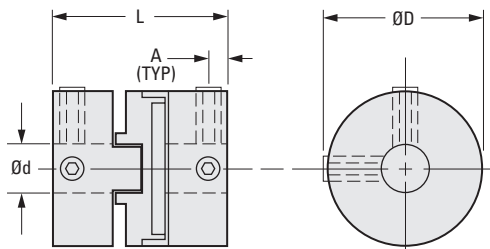
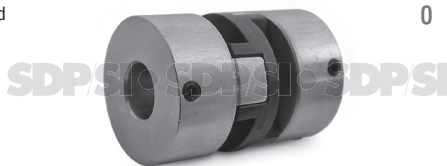
-40°C to +85°C

> FEATURES:

Easy Assembly.
 Lubrication-Free.
 Low Inertia.
 Corrosion-Resistant.
 Electrical Isolation.

> MAX. SERVICE TORQUE:

0.06 N • m for 06 series
 0.2 N • m for 09 series
 0.49 N • m for 13 series
 0.75 N • m for 15 series
 1.69 N • m for 19 series
 3.95 N • m for 25 series
 9.04 N • m for 33 series
 16.94 N • m for 41 series



The projections shown are per ISO convention.

> BUILD YOUR OWN COUPLING:

For Different Bore Combinations: Select hubs and corresponding disc within the same series.

For Hubs with the Same Bore: Select the "Complete Coupling"

△Coupling supplied as individual components

Set Screw & Split Hubs can be interchanged if discs from the same size O.D. are selected.

METRIC COMPONENT

Catalog Number			ØD	d Bore +0.030 0	L Length	Max. Shaft Depth	Set Screw	Max. Angular Offset	Max. Lateral Offset	A
Complete Coupling [△]	Hub Only	Disc Only								
A 5Z15M000602	A 5B15M000602	A 5P15M0006	6.4	2 3	12.7	3.8	M3*	1/2°	0.1	1.9
A 5Z15M000903	A 5B15M000903	A 5P15M0009	9.5	3 4	12.7	3.8	M3*	1/2°	0.1	1.9
A 5Z15M001304	A 5B15M001304	A 5P15M0013	12.7	4 6	15.9	4.3	M3	1/2°	0.1	2.4
A 5Z15M001504	A 5A15M001504	A 5P15M0015	15	4 6	25.9	8.1	M3	1/2°	0.1	2.4
A 5Z15M001906	A 5A15M001906	A 5P15M0019	19.1	6 8	22	6.3	M3	1/2°	0.2	2.4
A 5Z15M002508	A 5A15M002508	A 5P15M0025	25.4	8 10	28.4	8.6	M4	1/2°	0.2	3.2
A 5Z15M003310	A 5A15M003310	A 5P15M0033	33.3	10 12	48	13	M4	1/2°	0.2	3.2
A 5Z15M004110	A 5A15M004110	A 5P15M0041	41.1	10 12	50.8	16.7	M5	1/2°	0.25	4.4

*06 & 09 series have only one set screw at each end.