

SPLIT TYPE HUB

PHONE: 516.328.3300 • FAX: 516.326.8827 • WWW.SDP-SI.COM



> MATERIAL:

Hubs - Aluminum, Clear Anodized
Torque Disc - Acetal

> OPERATING TEMPERATURE:

-40°C to +85°C

> FEATURES:

Easy Assembly.
 Lubrication-Free.
 Low Inertia.
 Corrosion-Resistant.
 Electrical Isolation.

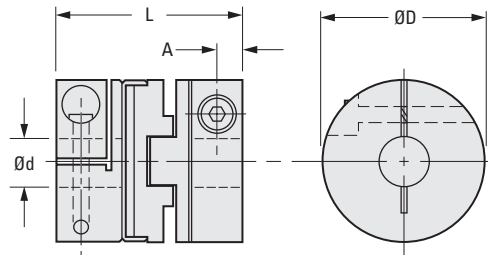
> MAX. SERVICE TORQUE:

0.75 N•m for 15 series
 1.69 N•m for 19 series
 3.95 N•m for 25 series
 9.04 N•m for 33 series

> BUILD YOUR OWN COUPLING:

For Different Bore Combinations: Select hubs and corresponding disc within the same series.
For Hubs with the Same Bore: Select the "Complete Coupling"

Set Screw & Split Hubs can be interchanged if discs from the same size O.D. are selected.



The projections shown are per ISO convention.

METRIC COMPONENT

Catalog Number			D Dia.	d Bore +0.030 0	L Length	Max. Shaft Depth	Cap Screw	Max. Angular Offset	Max. Lateral Offset	A
Complete Coupling	Hub Only	Disc Only								
A 5Z15M331503	A 5A15M331503	A 5P15M3315	15	3	25.9	8.1	M2	1/2°	0.1	2.4
A 5Z15M331504	A 5A15M331504			4						
A 5Z15M331506	A 5A15M331506			6						
A 5Z15M331903	A 5A15M331903	A 5P15M3319	19.1	3	22	6.3	M2.5	1/2°	0.2	2.4
A 5Z15M331904	A 5A15M331904			4						
A 5Z15M331906	A 5A15M331906			6						
A 5Z15M332506	A 5A15M332506	A 5P15M3325	25.4	6	28.4	8.6	M3	1/2°	0.2	3.2
A 5Z15M332508	A 5A15M332508			8						
A 5Z15M332510	A 5A15M332510			10						
A 5Z15M333308	A 5A15M333308	A 5P15M3333	33.3	8	48	13	M3	1/2°	0.2	3.2
A 5Z15M333310	A 5A15M333310			10						
A 5Z15M333312	A 5A15M333312			12						