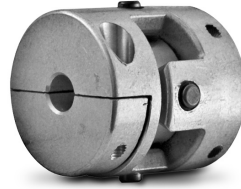


SPLIT TYPE HUB
 ZERO BACKLASH
 HIGH TORSIONAL STIFFNESS
 HIGH TORQUE
 SMALL ECCENTRIC REACTION FORCE

PHONE: 516.328.3300 • FAX: 516.326.8827 • WWW.SDP-SI.COM



► MATERIAL:

- Hubs - Aluminum Alloy
- Pins - Steel
- Bushings - Polyimide
- Spacers - Stainless Steel
- Screws - Steel, Black Oxide

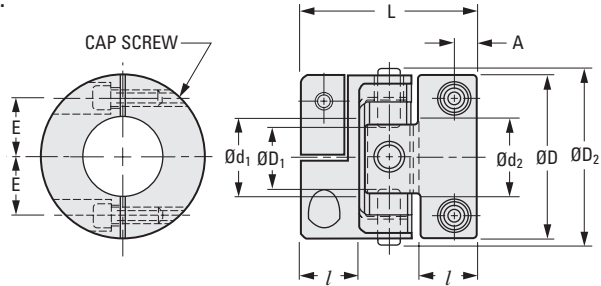
► MISALIGNMENT COMPENSATION:

- Max. Angular Offset: 1°
- Max. Lateral Offset: 0.2

► SPECIFICATION:

- Shaft Tolerance (h7):
- 3 to 6 mm 0/-0.012
- 8 & 10 mm 0/-0.015
- 12 mm 0/-0.018

Coupling series **S50MCTM...** has been replaced by new series **S50XUTM...**
 When selecting replacement couplings, be sure to verify dimensions and specifications.



The projections shown are per ISO convention.

METRIC COMPONENT

Catalog Number	D Dia.	d ₁ Bore	d ₂ Bore	D ₁ Dia.	D ₂ Dia.	L	l	A	E	Cap Screw
S50XUTM15H03H03	15	3	3	4	16	18	6	2.5	5.2	M2
S50XUTM15H04H04		4	4							
S50XUTM15H06H06		6	6							
S50XUTM20H04H04	20	4	4	7	22	20	7	2.7	6.5	M2
S50XUTM20H04H06		4	6							
S50XUTM20H06H06		6	6							
S50XUTM20H06H08		6	8							
S50XUTM20H08H08		8	8							
S50XUTM25H06H06	25	6	6	10	27	27	9	3.5	9	M2.5
S50XUTM25H08H08		8	8							
S50XUTM25H08H10		8	10							
S50XUTM25H10H10		10	10							
S50XUTM25H10H12		10	12							
S50XUTM25H12H12		12	12							

Coupling Series (Ref. Only)	Max.* Bore	Rated Torque N • m	Max. rpm	Moment of Inertia ^Δ kg • m ²	Static Torsional Stiffness N • m/rad	Weight ^Δ grams
S50XUTM15...	6	0.3	42000	2.3 x 10 ⁻⁷	200	8
S50XUTM20...	8	0.6	31000	8.1 x 10 ⁻⁷	400	16
S50XUTM25...	12	1.2	25000	2.7 x 10 ⁻⁶	900	33

^ΔBased on max. bore dimension.

*Other bore diameter combinations and bore sizes not exceeding the maximum listed above are available on special order.

Continued on the next page

